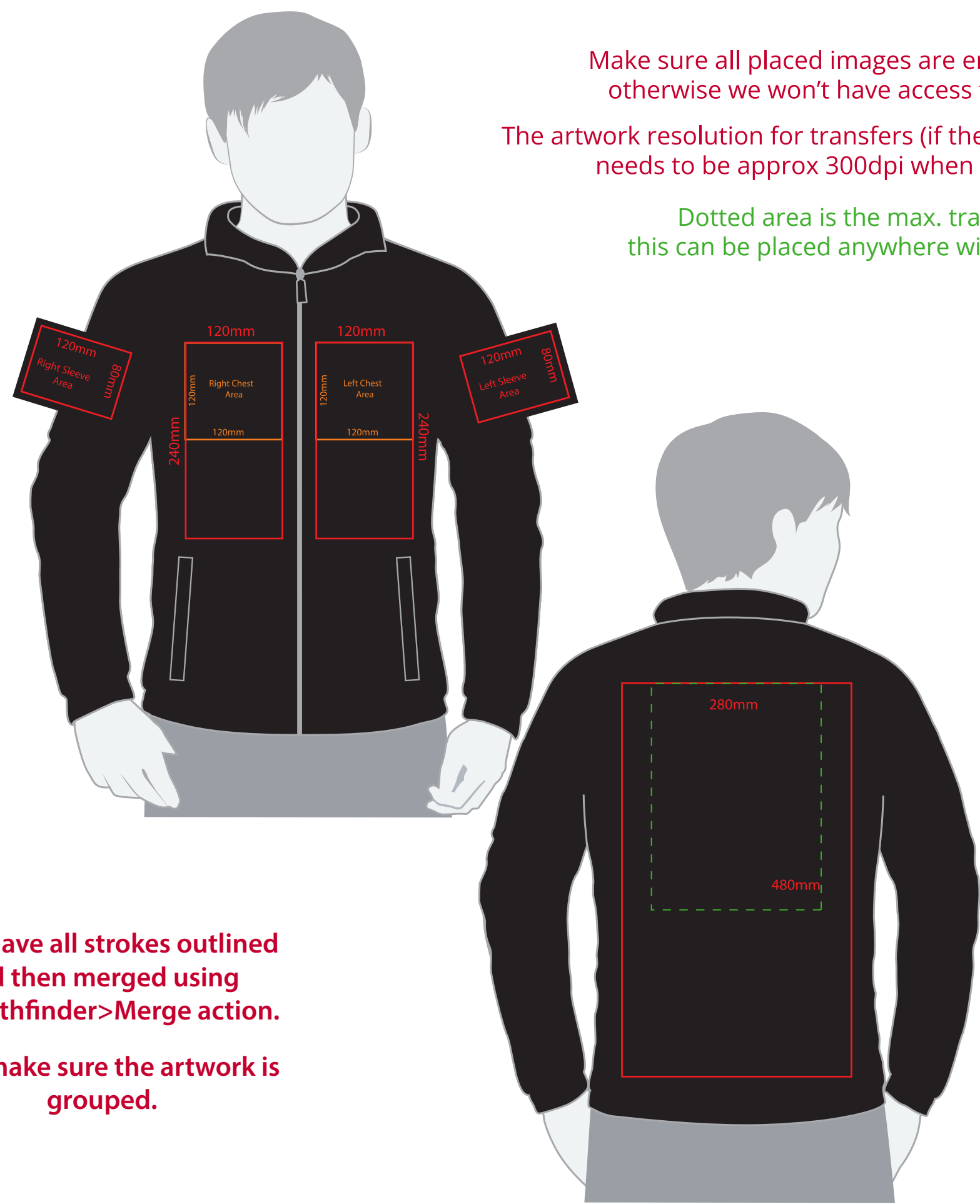


# YOUR VISUAL PROOF (1 of 2)

Order Reference	XXXXXX
Date created	xx/xx/xx
Created by	xx



Make sure all placed images are embed in the file  
otherwise we won't have access to the artwork

The artwork resolution for transfers (if the artwork isn't vectored)  
needs to be approx 300dpi when set at print size

Dotted area is the max. transfer size,  
this can be placed anywhere within the guides

Must have all strokes outlined  
and then merged using  
the Pathfinder>Merge action.

Then make sure the artwork is  
grouped.

Product	189399
Colour	XXXXXX
Branding	Full colour (transfer)

## Artwork Advisories

This template is not to scale and is  
to be used as a **guide for print size  
& positioning only.**

When transfer printed  
**an outline edge (keyline) may  
be visible.**

**Full colour printed colours may  
differ** when printed to the  
final product.

It is the customer's responsibility to ensure  
that the proof is correct in all areas. Please be  
sure to double-check spelling, grammar,  
layout and design before approving artwork.  
**Due to the variation in monitor colours and  
adjustments, PDF proofs may not provide  
an accurate colour representation of the  
final product & printed work.** Once artwork  
is approved, your order will be processed  
based on the above unless any amendments  
are made. All orders are subject to our terms  
and conditions.

**Please email all approvals/amends to your  
order processor.**

Artwork not to scale (to be used as a guide only) Please see page 2 for actual artwork size.

# YOUR VISUAL PROOF (2 of 2)



Visual Scale 100%

Order Reference	xxxxxxx
Date created	xx/xx/xx
Created by	xx

Print position	xxxx
Print area	xx x xxmm
Logo size	xx x xxmm
Branding	Full colour transfer

## Artwork Colours

