

Job Information	Print Information	Artwork Advisory
-----------------	-------------------	------------------

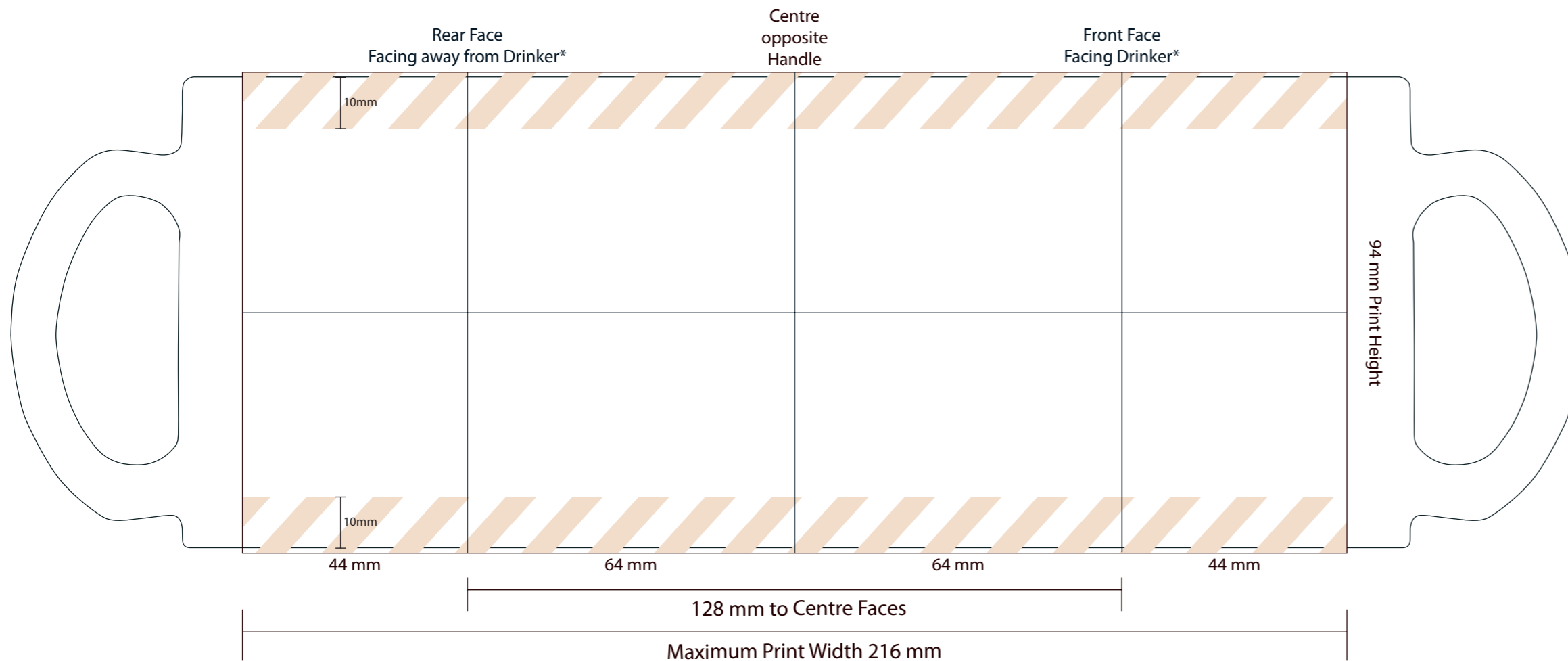
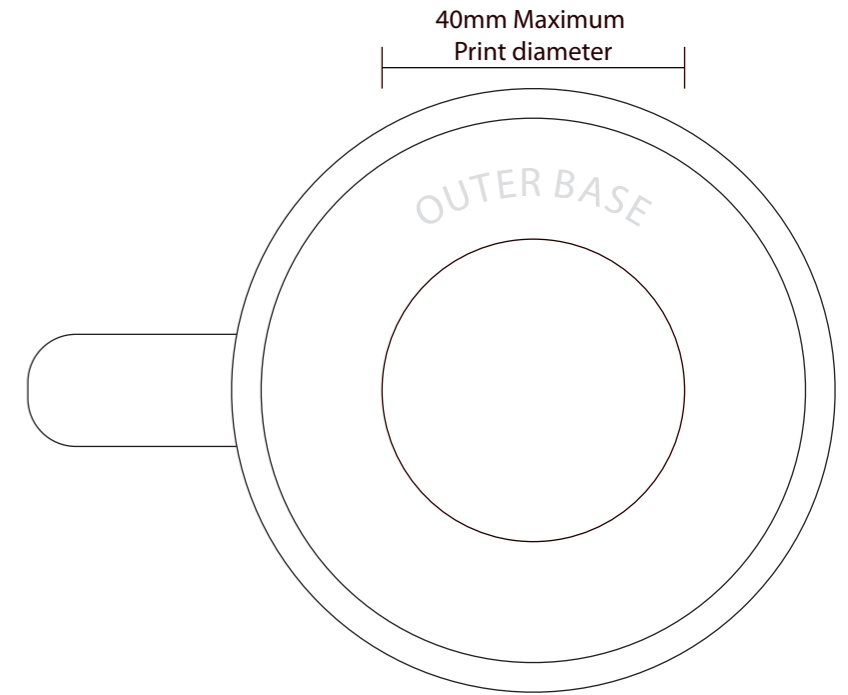
**Job No:**  
**Description:** Sample  
**Product:** Glass Photo  
**Colour:** Clear  
**Proof No:** 1  
**Date:**  
**Repro:** AE

**Process:** Dyesublimation  
**Dimensions:** 216 x 94mm  
**Colour(s):** CMYK

All dimensions are +/- manufacturing tolerances  
 \*Faces indicate a right hand drinker,  
 Screen printed detail must be at least 1pt (0.353mm) thick  
 Text should be minimum 8pt to remain legible.  
 Light text on a dark background will reproduce better if bold  
 Please avoid placing critical matter (text, Logos, Borders) within these areas



Any part of the artwork that shows white here on your proof, including text, logos and backgrounds to images will show as the base colour of the product.  
 Dye sublimation uses CMYK ink and there is no white in this process.  
 On a glass product the end result will be a translucent effect.



**10540 Glass Photo**

Due to variations beyond our control and the nature of the print process the colour on the pdf may differ from that on the final product.