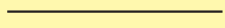


DR1201 - Stadium Cup

Product Dimension(mm): 95x150

Minimum Print Restrictions (Screen)

Line thickness (0.3mm)



Reversed Line (0.3mm)



Text (6pt)

A E I O U

Reversed Text (10pt)

A E I O U

Any lines or text below these restrictions will result in a loss of detail when printed

Actual Artwork Size(s):

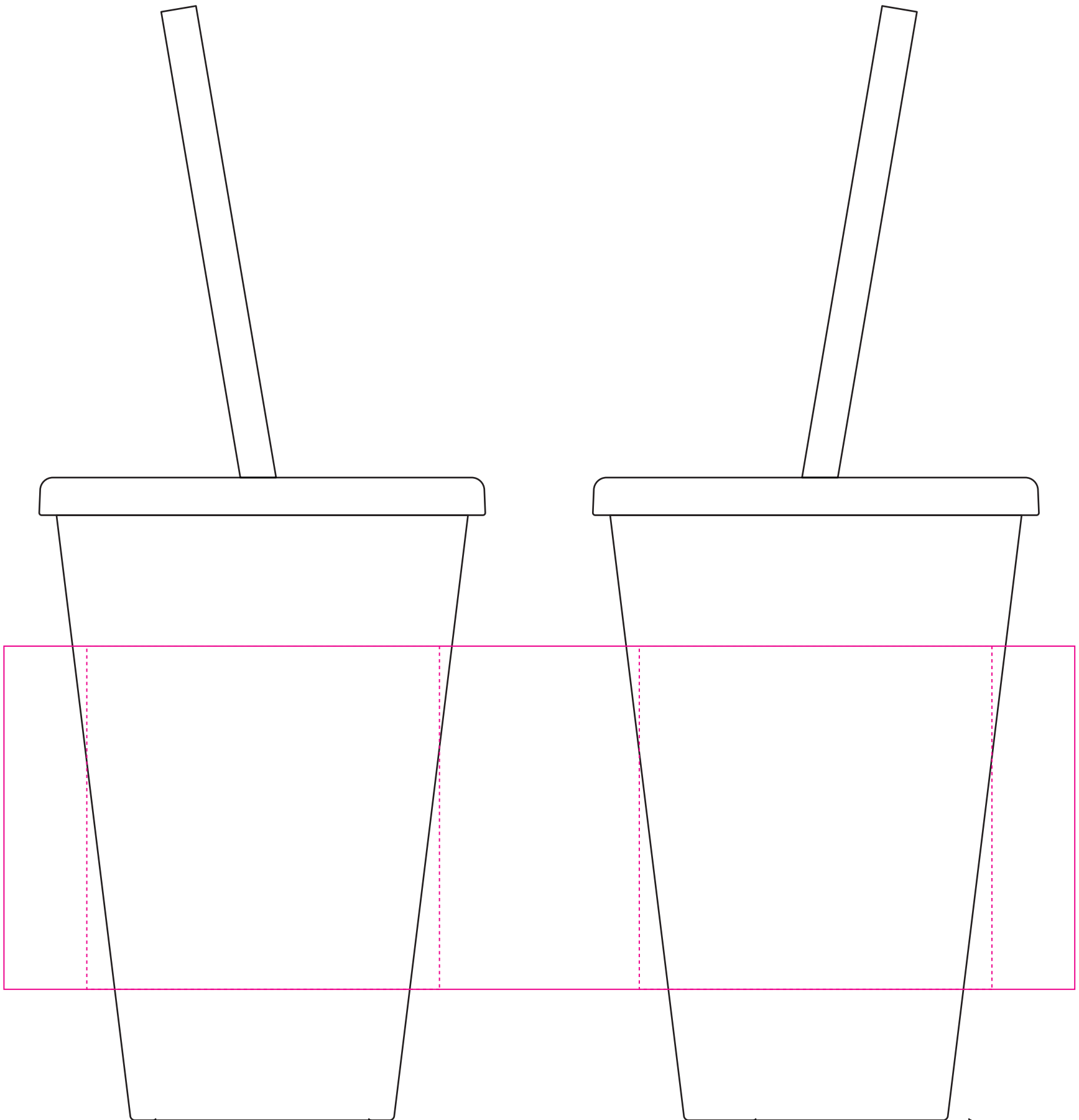
Wraparound = - - - - -

Nearside = - - - - -

Farside = - - - - -

Please read carefully:

Please be advised that a full wrap print is not available on this mug, a 5mm(minimum) gap will be between the start/end of any wrap artwork.



Available Print Area(s):

- Max Print Area (Wraparound) = 228x73mm
- - - - Max Print Area (Nearside/Farside) = 75x73mm

Notes For Artroom:

- If Artwork Contains a QR Code It Can Be No Larger Than 25x25mm