

ST2613 - Rubik's Keychain

Product Dimension(mm): 34x34x34

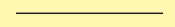
Minimum Print Restrictions

Line thickness (0.2mm)

Reversed Line (0.2mm)

Text (3pt)

Reversed Text (4pt)



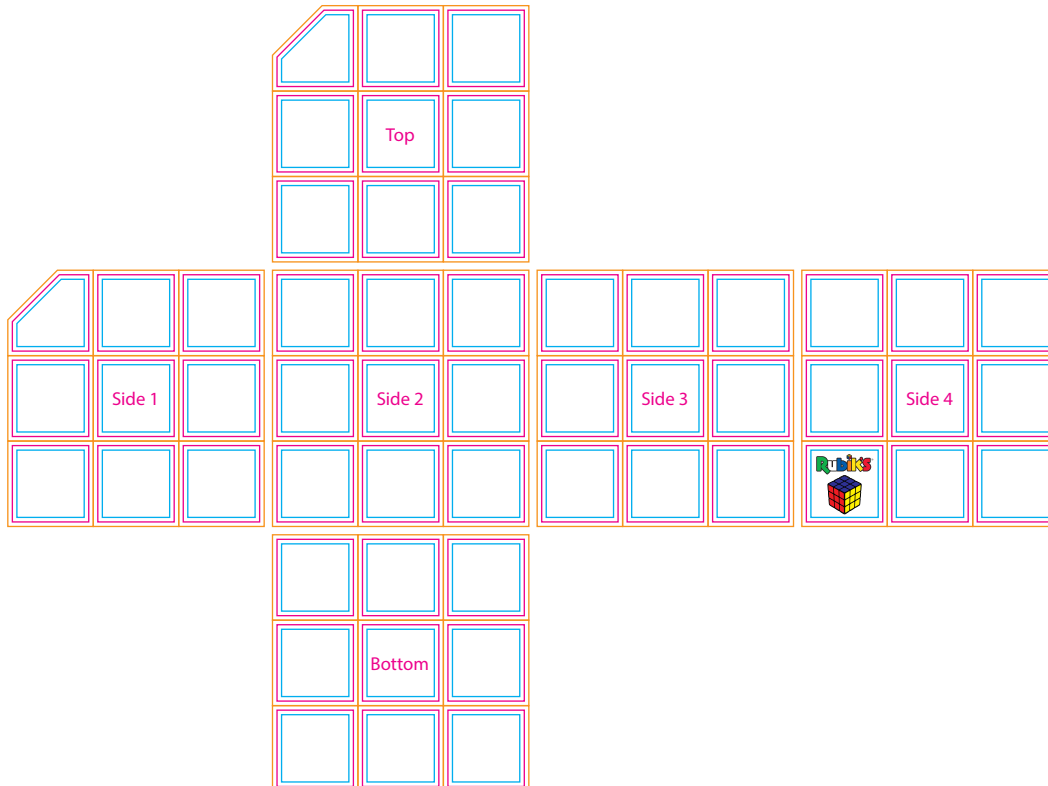
Any lines or text below these restrictions will result in a loss of detail when printed

Actual Artwork Size(s):

Artwork = - - - - -

Please read carefully:

N/A



Available Print Area(s):

— Max Print Area(LargeSquare) = 33x33mm

— Bleed Boundary(SmallSquare) = 11x11mm

— Max Print Area(SmallSquare) = 10x10mm

— Text Limit(SmallSquare) = 9x9mm

Notes For Artroom:

- If the Bottom panel is required to line up with it's opposite side (Top) when placed on Side 2, then the Bottom panel needs rotating 180 degrees
- If the design is to continue across panels then no side should be rotated.