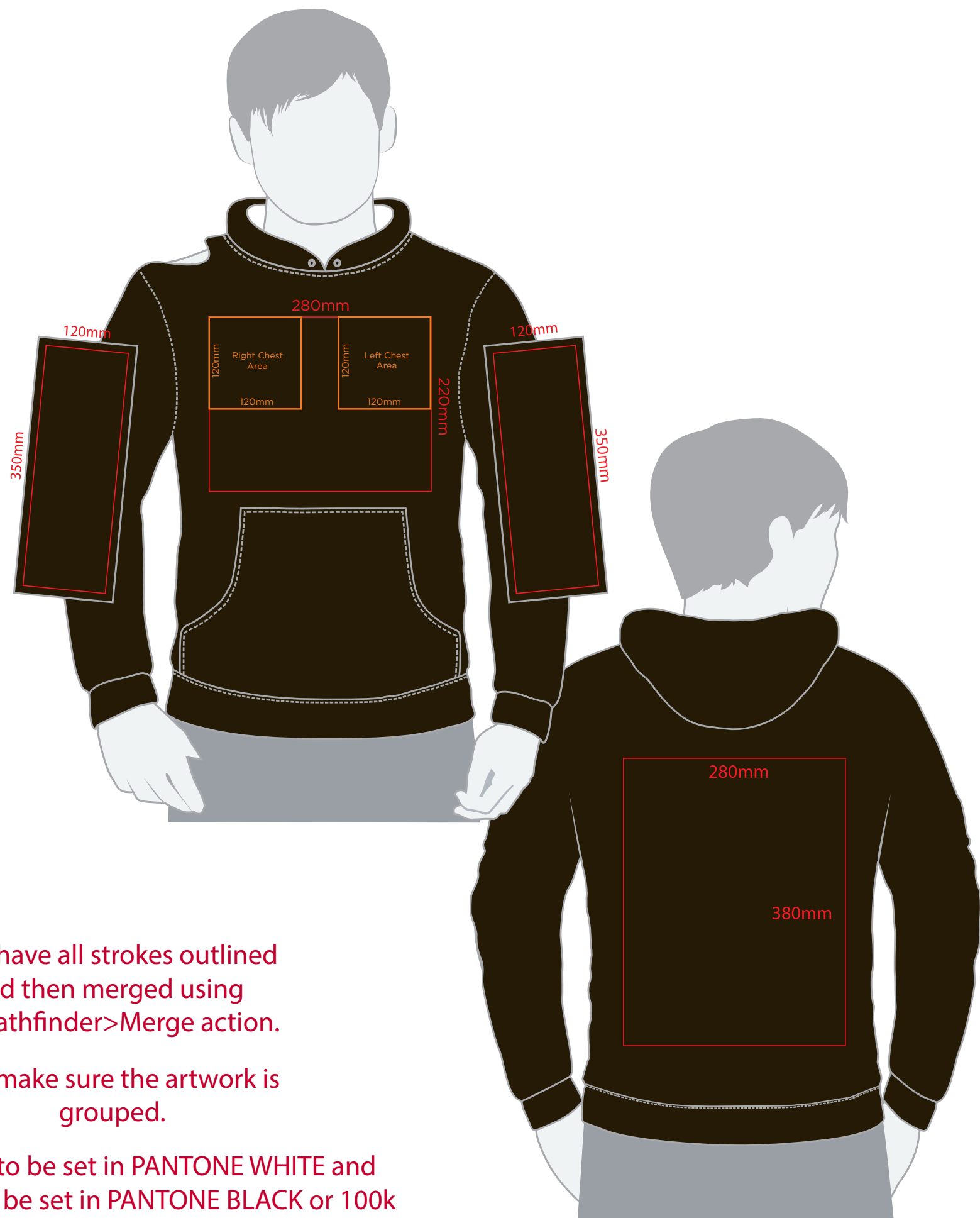


# YOUR VISUAL PROOF (1 of 2)



Must have all strokes outlined  
and then merged using  
the Pathfinder>Merge action.

Then make sure the artwork is  
grouped.

- \* White needs to be set in PANTONE WHITE and
- \* Black needs to be set in PANTONE BLACK or 100k

Order Reference	xxxxxx
Date created	xx/xx/xx
Created by	xx

Product	254437
Colour	xxxxxx
Branding	Spot colour

## Artwork Advisories

This template is not to scale and is  
to be used as a **guide for print size  
& positioning only.**

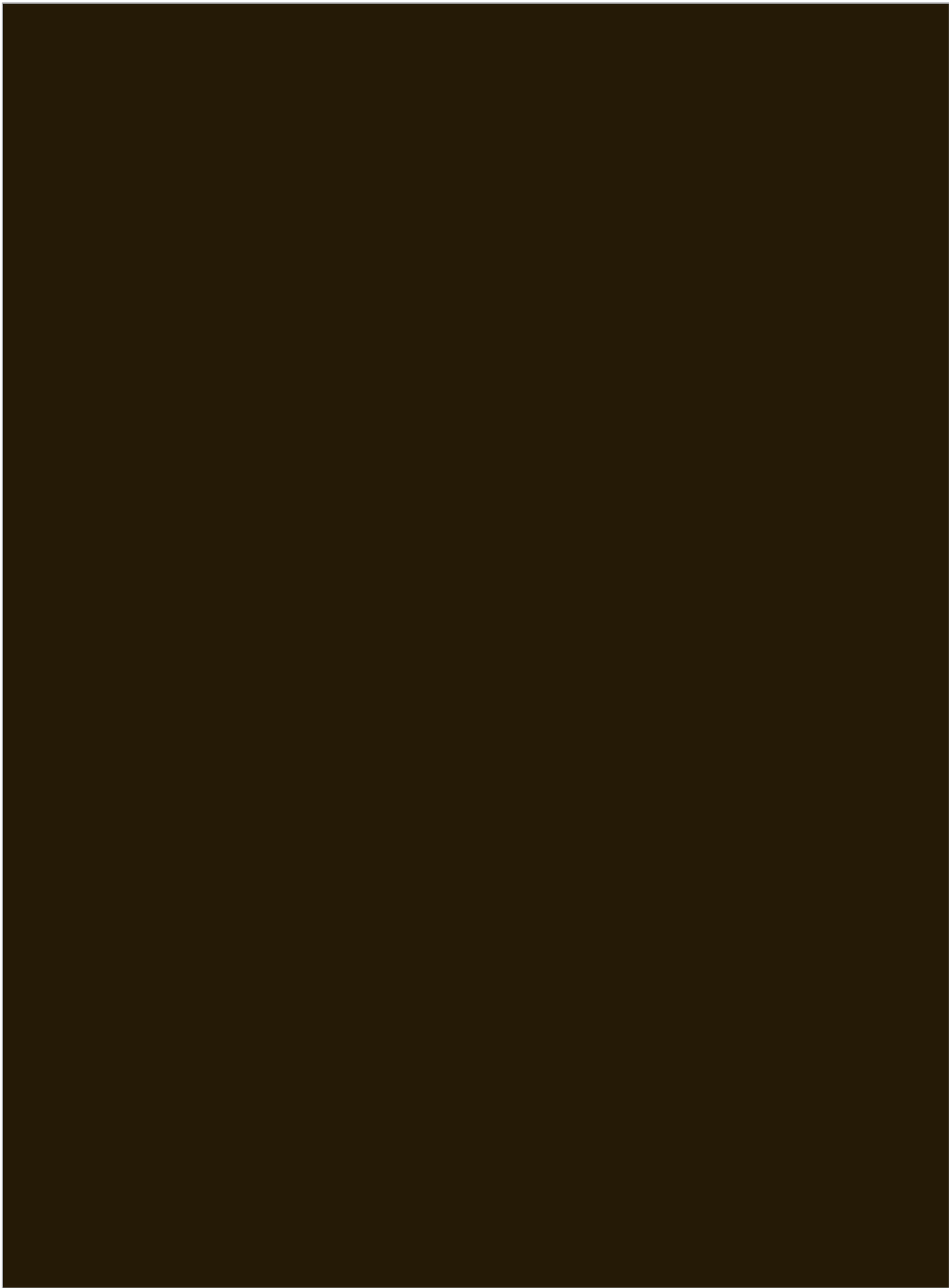
**A layer of white is printed  
underneath the artwork** to  
ensure the colour of the product  
doesn't affect the print.

It is the customer's responsibility to ensure  
that the proof is correct in all areas. Please be  
sure to double-check spelling, grammar,  
layout and design before approving artwork.  
**Due to the variation in monitor colours and  
adjustments, PDF proofs may not provide  
an accurate colour representation of the  
final product & printed work.** Once artwork  
is approved, your order will be processed  
based on the above unless any amendments  
are made. All orders are subject to our terms  
and conditions.

**Please email all approvals/amends to your  
order processor.**

**Artwork not to scale (to be used as a guide only)** Please see page 2 for actual artwork size.

# YOUR VISUAL PROOF (2 of 2)



Visual Scale 100%

Order Reference	xxxxxxx
Date created	xx/xx/xx
Created by	xx

Print position	xxxx
Print area	xx x xxmm
Logo size	xx x xxmm
Branding	Spot colour

PANTONE® Colours

