

YOUR VISUAL PROOF (1 of 9)



For Visual Purposes Only. Please see page 2 for actual artwork size.

Order Reference	xxxxxxx
Date created	xx/xx/xx
Created by	xx

Product	254204
Colour	White
Branding	Full colour

Artwork Advisories

Full colour printed colours may differ when printed to the final product.

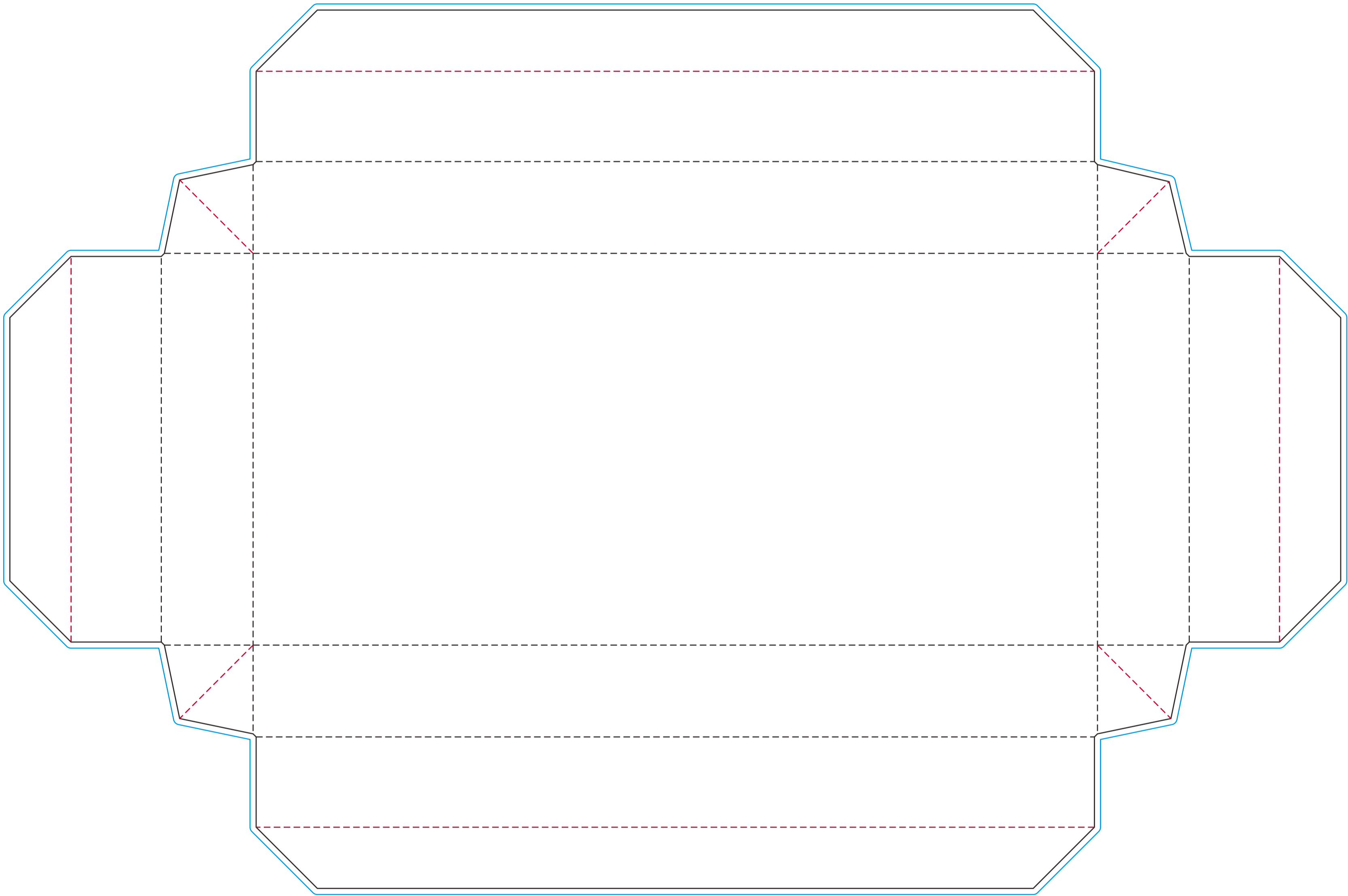
It is the customer's responsibility to ensure that the proof is correct in all areas. Please be sure to double-check spelling, grammar, layout and design before approving artwork. Due to the variation in monitor colours and adjustments, PDF proofs may not provide an accurate colour representation **of the final product & printed work**. Once artwork is approved, your order will be processed based on the above unless any amendments are made. All orders are subject to our terms and conditions.

Please email all approvals/amends to your **order processor**.

YOUR VISUAL PROOF (2 of 9)

Order Reference xxxxxx
Date created xx/xx/xx
Created by xx

Print area 435 x 287 mm
Logo size xx x xxmm
Branding Full Colour

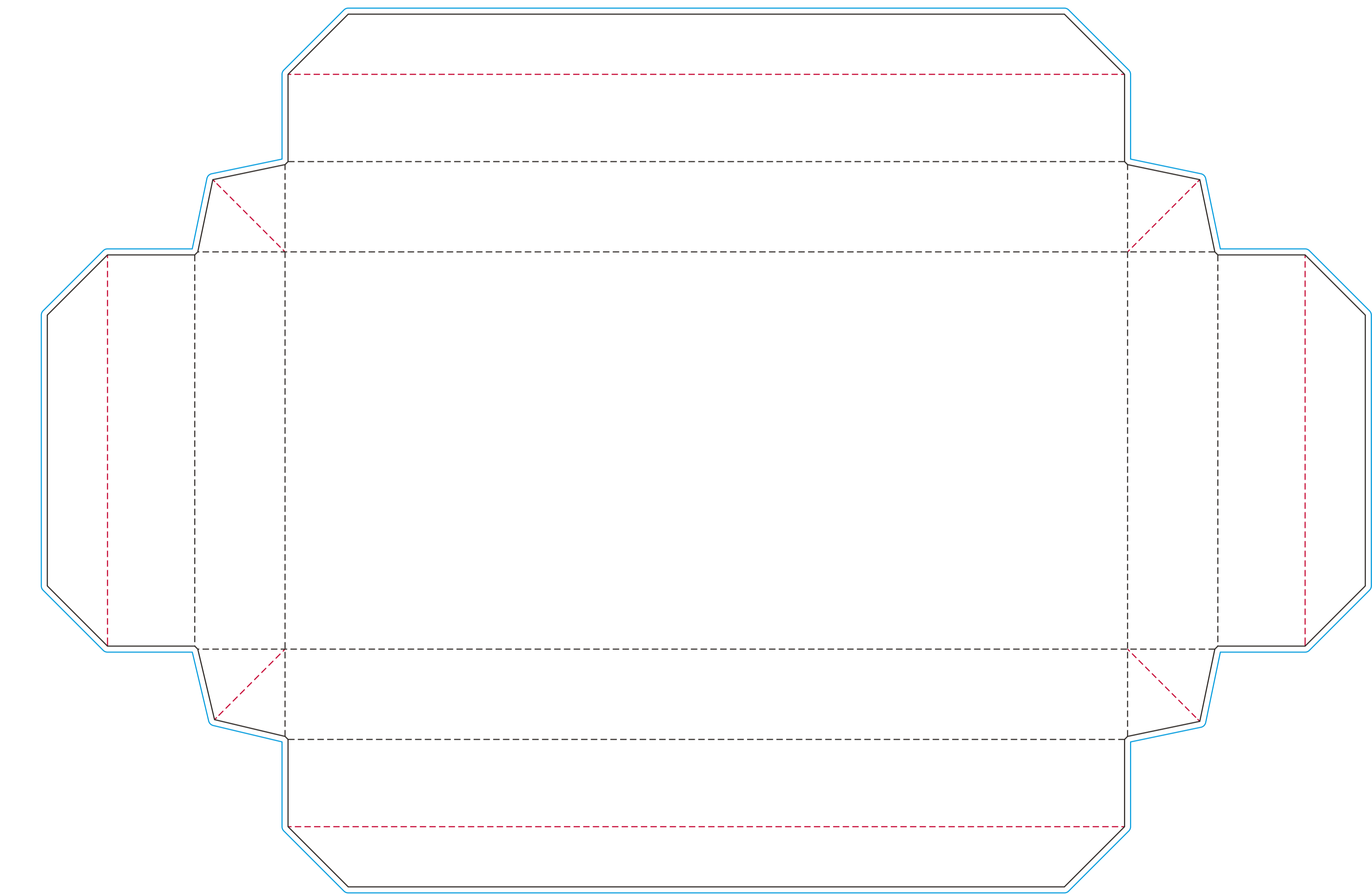


- Perforated Lines
- Fold Lines
- Product Size
- Bleed

Visual scale 100%.

YOUR VISUAL PROOF (3 of 9)

Order Reference	xxxxxx
Date created	xx/xx/xx
Created by	xx
Print area	438 x 290 mm
Logo size	xx x xxmm
Branding	Full colour



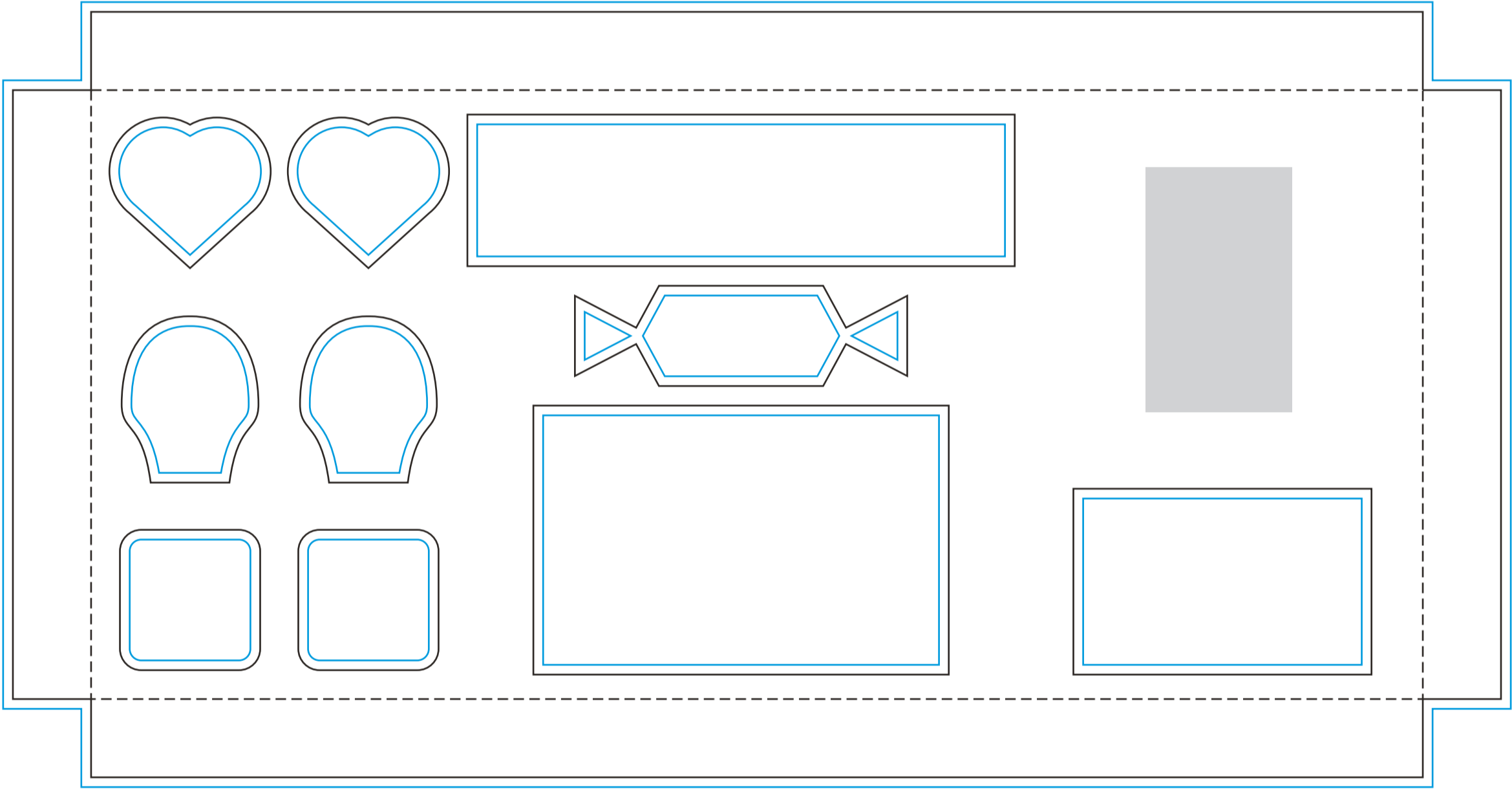
- Perforated Lines
- Fold Lines
- Product Size
- Bleed

Visual scale 100%.

YOUR VISUAL PROOF (4 of 9)

Order Reference	xxxxxxx
Date created	xx/xx/xx
Created by	xx

Print area	304.5 x 156.5 mm
Logo size	xx x xxmm
Branding	Full colour

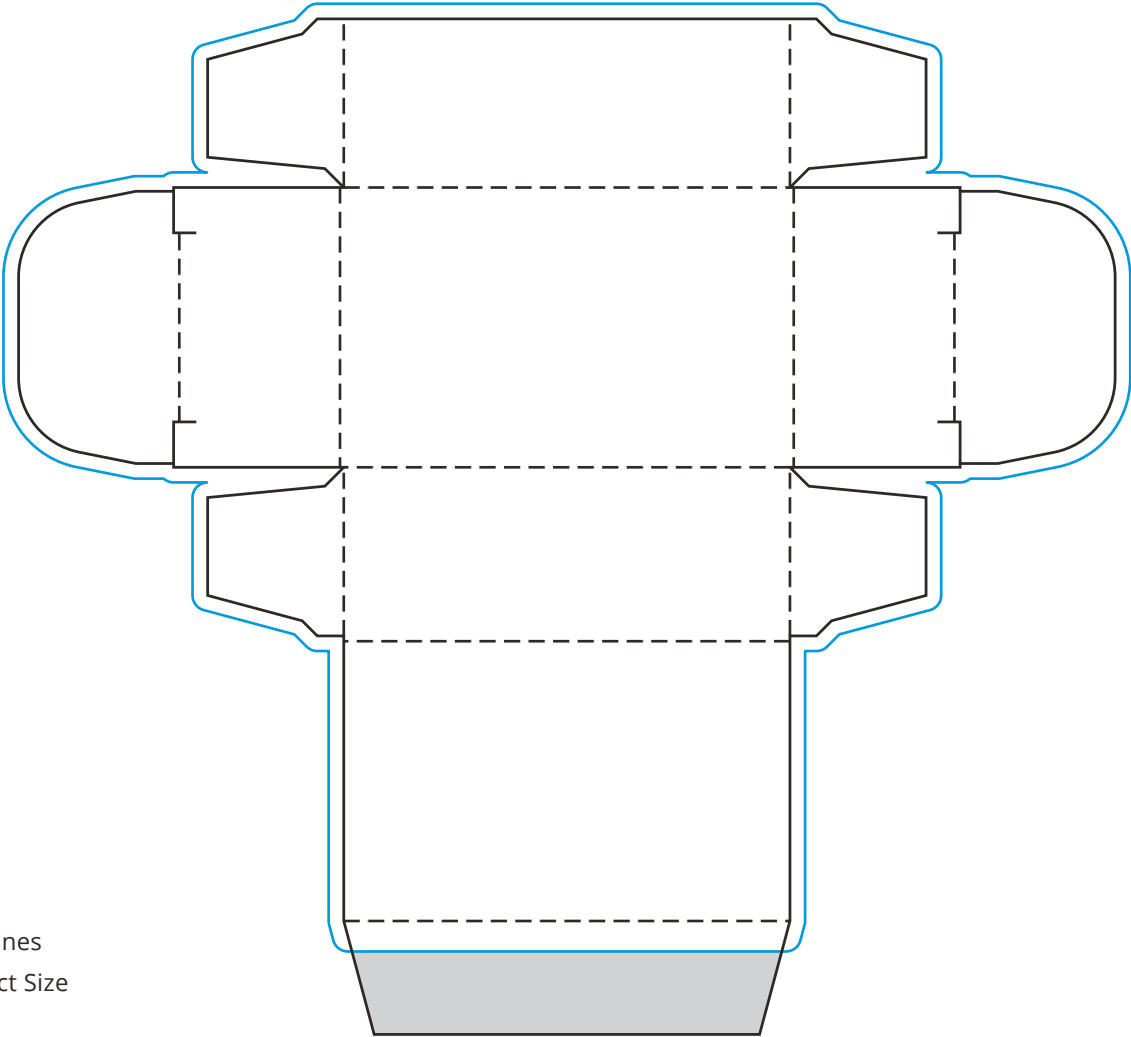


- Fold Lines
- Product Size
- Bleed
- No Print Area

Visual scale 100%.

YOUR VISUAL PROOF (5 of 9)

Order Reference	xxxxxx
Date created	xx/xx/xx
Created by	xx
Print area	145 x 134.3 mm
Logo size	xx x xxmm
Branding	Spot colour



- Fold Lines
- Product Size
- Bleed
- No Print Area

Visual scale 100%.

YOUR VISUAL PROOF (6 of 9)

Order Reference	xxxxxx
Date created	xx/xx/xx
Created by	xx
Print area	178 x 72.5 mm
Logo size	xx x xxmm
Branding	Full Colour

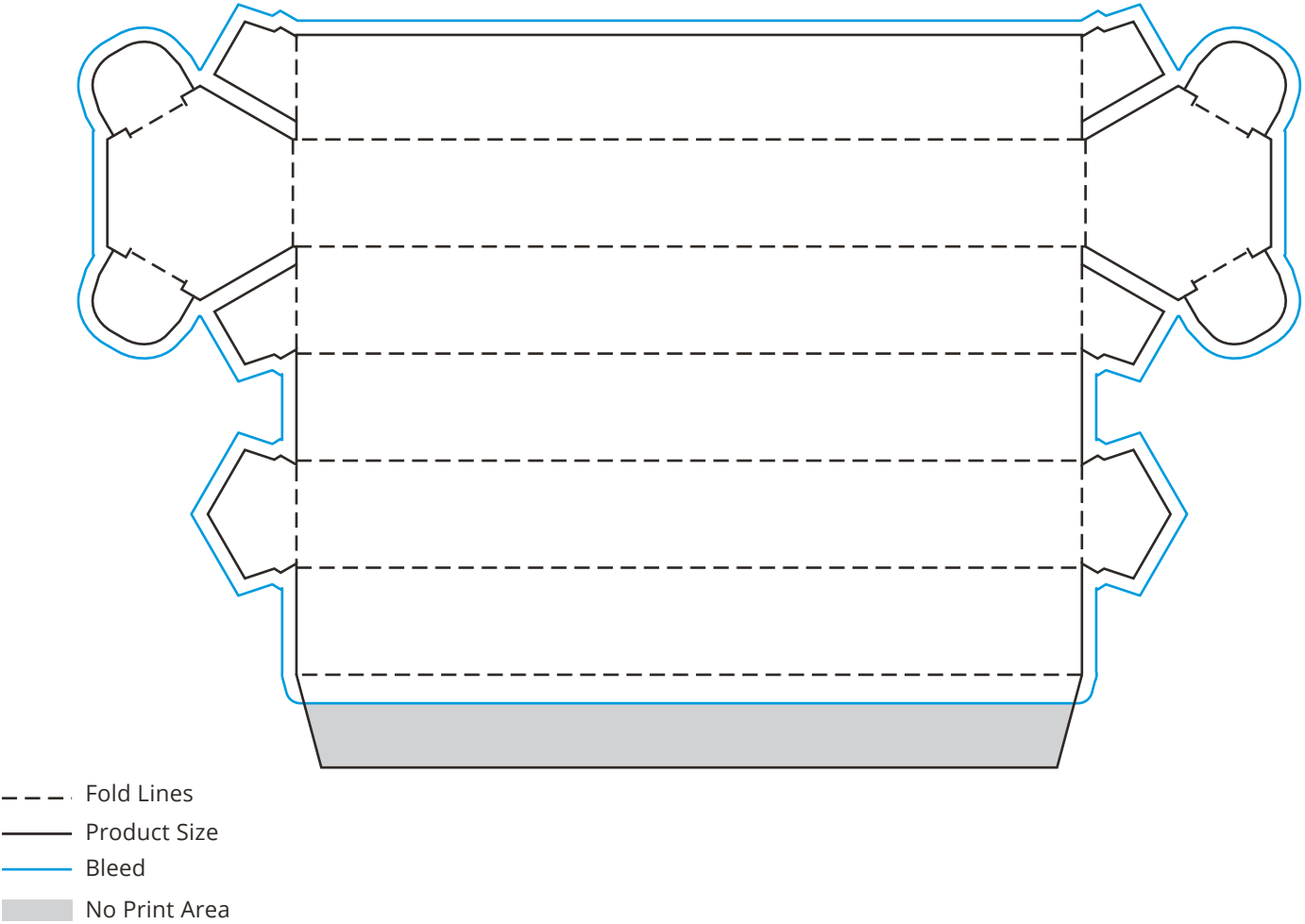


- Fold Lines
- Product Size
- Registration Area
- No Print Area

Visual scale 100%.

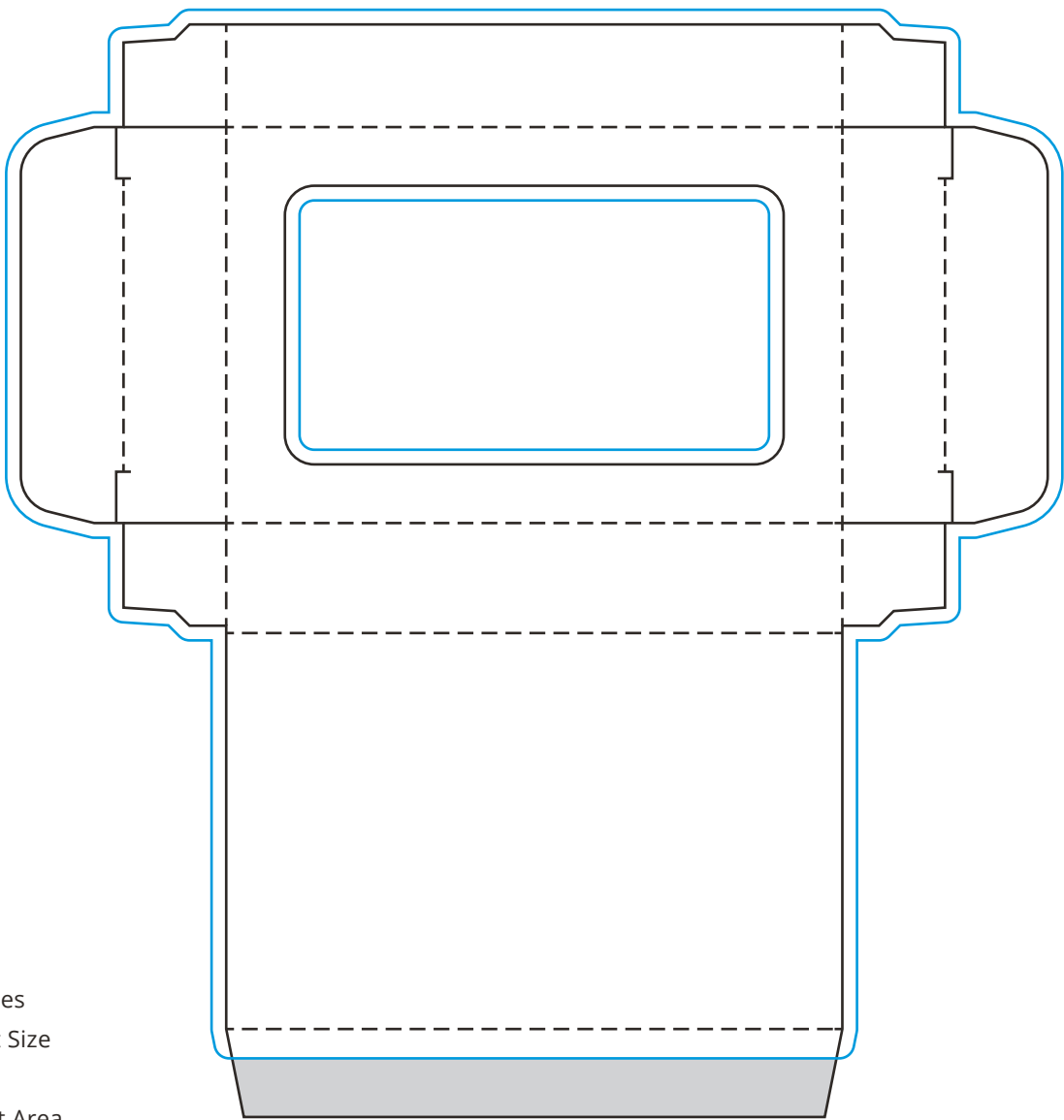
YOUR VISUAL PROOF (7 of 9)

Order Reference	xxxxxx
Date created	xx/xx/xx
Created by	xx
Print area	90 x 164 mm
Logo size	xx x xxmm
Branding	Full colour



Visual scale 100%.

YOUR VISUAL PROOF (8 of 9)



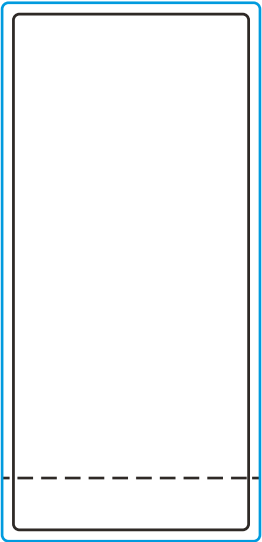
- Fold Lines
- Product Size
- Bleed
- No Print Area

Order Reference xxxxxx
Date created xx/xx/xx
Created by xx

Print area 140 x 149 mm
Logo size xx x xxmm
Branding Full Colour

YOUR VISUAL PROOF (9 of 9)

Order Reference	xxxxxx
Date created	xx/xx/xx
Created by	xx
Print area	31 x 68 mm
Logo size	xx x xxmm
Branding	Full colour



- Fold Lines
- Product Size
- Bleed

Visual scale 100%.