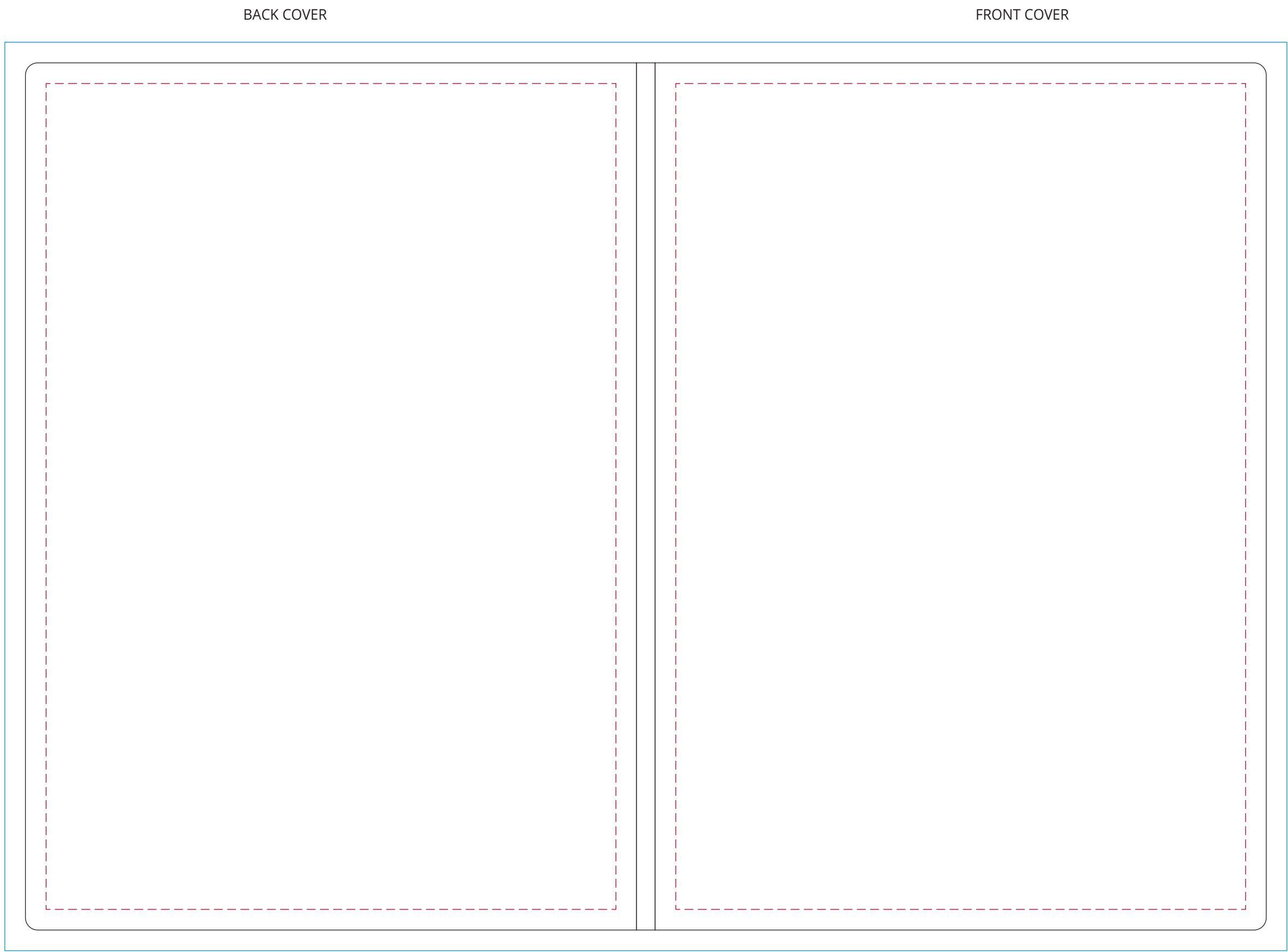


YOUR VISUAL PROOF (1 of 2)



- Safe text area
- Print area / cut line
- Bleed

Scale	100%	Print area	148 x 210 mm	Logo size	xx x xx mm
-------	------	------------	--------------	-----------	------------

Order Reference	xxxxxx
Date created	xx/xx/xx
Created by	xx

Product	247910
Colour	xxx (eyedrop from images)
Branding	Spot Colour / Full Colour

PANTONE® Colours



Artwork Advisories

This template is not to scale and is to be used as a **guide for print size & positioning only**.
Pantones have been converted to CMYK for full colour printing.

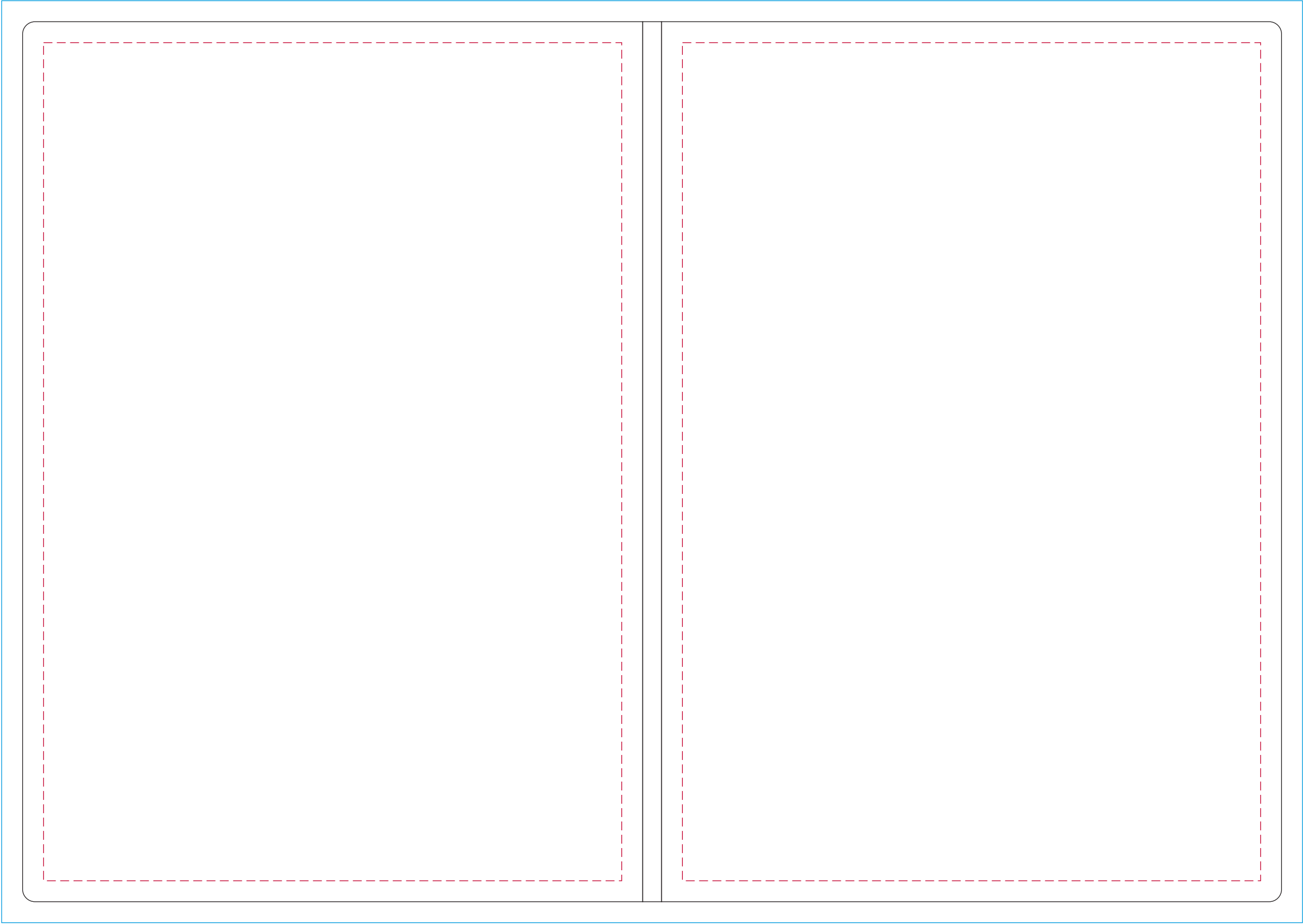
It is the customer's responsibility to ensure that the proof is correct in all areas. Please be sure to double-check spelling, grammar, layout and design before approving artwork. **Due to the variation in monitor colours and adjustments, PDF proofs may not provide an accurate colour representation of the final product & printed work.** Once artwork is approved, your order will be processed based on the above unless any amendments are made. All orders are subject to our terms and conditions.

Please email all approvals/amends to your order processor.

YOUR VISUAL PROOF (2 of 2)

EACH SHEET REVERSE

EACH SHEET FRONT



- Safe text area
- Print area / cut line
- Bleed

Scale 100% **Print area** 148 x 210 mm **Logo size** xx x xx mm

Order Reference xxxxxx
Date created xx/xx/xx
Created by xx

Product 247910
Colour White
Branding Spot Colour / Full Colour

PANTONE® Colours



Artwork Advisories

Pantones have been converted to CMYK for full colour printing.

It is the customer's responsibility to ensure that the proof is correct in all areas. Please be sure to double-check spelling, grammar, layout and design before approving artwork. **Due to the variation in monitor colours and adjustments, PDF proofs may not provide an accurate colour representation of the final product & printed work.** Once artwork is approved, your order will be processed based on the above unless any amendments are made. All orders are subject to our terms and conditions.

Please email all approvals/amends to your order processor.