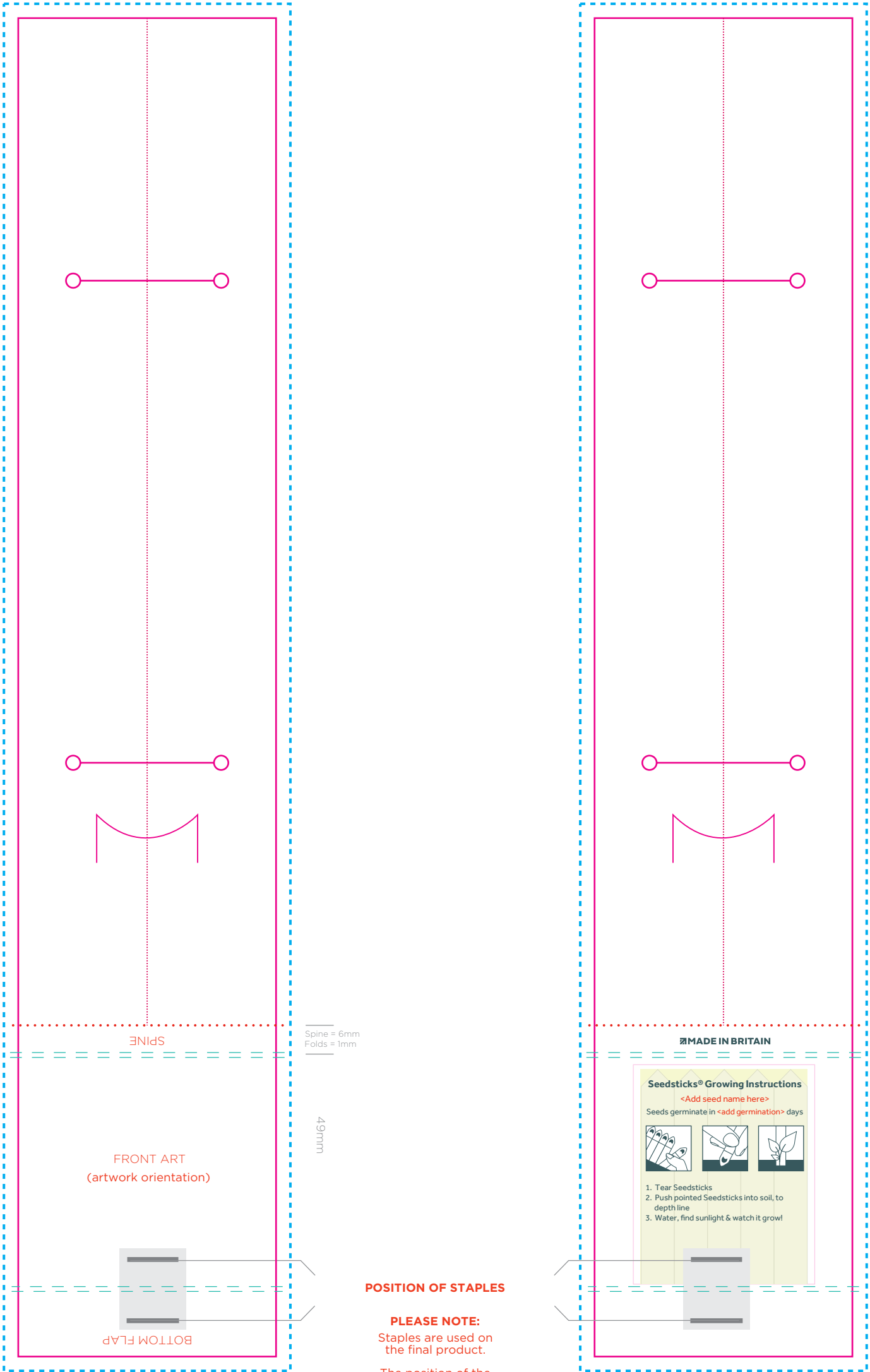


Artwork Advisories

Full colour printed colours may differ when printed to the final product.

Finished size 54.0 mm x 280.3 mm

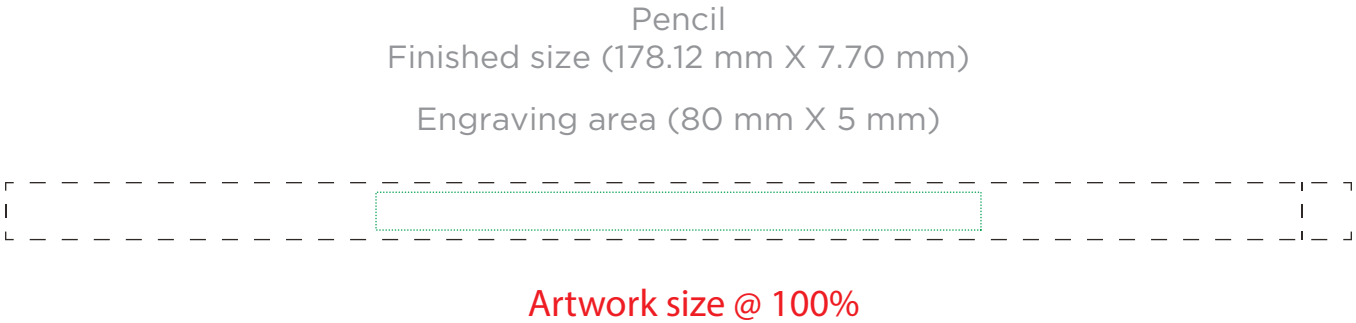


ARTWORK SPECIFICATIONS / REQUIREMENTS

- Art must be supplied in CMYK format or PMS colours specified, RGB is not acceptable
- All fonts must be converted to outlines
- Working file must be compatible with CS5 - Illustrator
- 3mm bleed is required beyond the trim lines
- Files to be supplied in PDF, EPS or AI format only
- A PDF proof will be emailed for confirmation of design for you to sign off prior to print production
- No responsibility will be accepted for errors or changes once the artwork has been signed off

KEY

- Fold Lines
- Cut Line
- Bleed Line
- Scissor cut line
- Hidden Area



ARTWORK SPECIFICATIONS / REQUIREMENTS

Files to be supplied in PDF format only, with artwork created using vector format. JPEG will not be accepted.

Please turn off the GUIDE layers on the template, before sending the PDF.

All fonts must be converted to outlines.

Minimum 1mm height for all text is recommended.

QR codes should be a minimum 25mm in height

A proof will be emailed to you, to sign off prior to going into print production. Please take special care to check your artwork, deisgn and layout.

No responsibility will be accepted for errors or changes once the artwork has been approved.

KEY

Engraving Area