

# YOUR VISUAL PROOF (1 of 2)

Order Reference    **xxxxxx**  
Date created        **xx/xx/xx**  
Created by            **xx**

Product              **245243**  
Colour                **Ice White**  
Branding             **Spot Colour**

### PANTONE® Colours

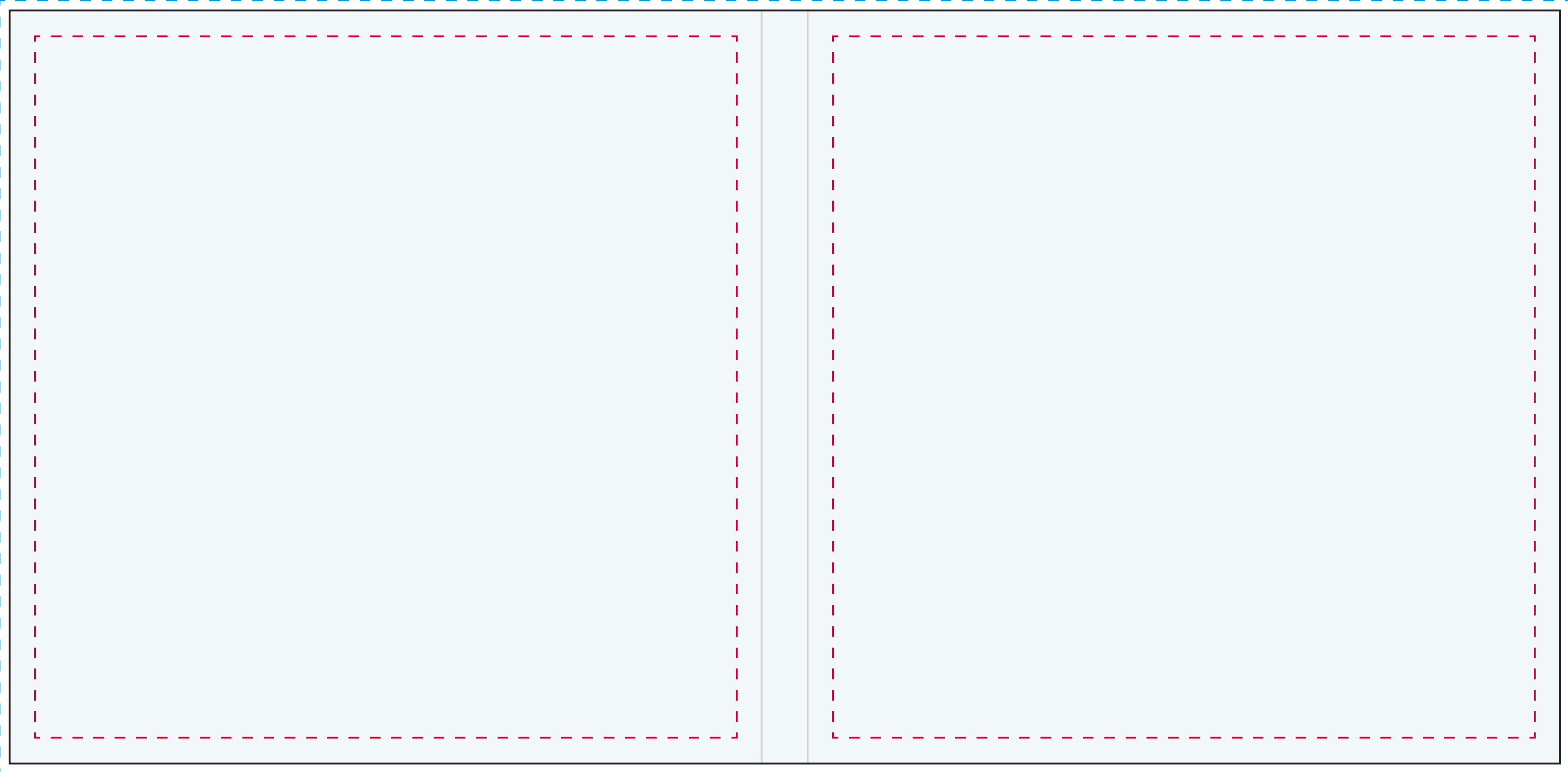


### Artwork Advisories



It is the customer's responsibility to ensure that the proof is correct in all areas. Please be sure to double-check spelling, grammar, layout and design before approving artwork. Due to the variation in monitor colours and adjustments, PDF proofs may not provide an accurate colour representation of the final product & printed work. Once artwork is approved, your order will be processed based on the above unless any amendments are made. All orders are subject to our terms and conditions.

Please email all approvals/amends to your order processor.



Back Cover

Front Cover

- - - - Safe text area
- Print area / cut line
- - - - Bleed

Scale    **100%**    Print area    **305 x 148 mm**    Logo size    **xx x xx mm**

# YOUR VISUAL PROOF (2 of 2)

Order Reference    **xxxxxx**  
Date created        **xx/xx/xx**  
Created by          **xx**

Product             **245243**  
Colour                **White**  
Branding            **Spot Colour**

### PANTONE® Colours

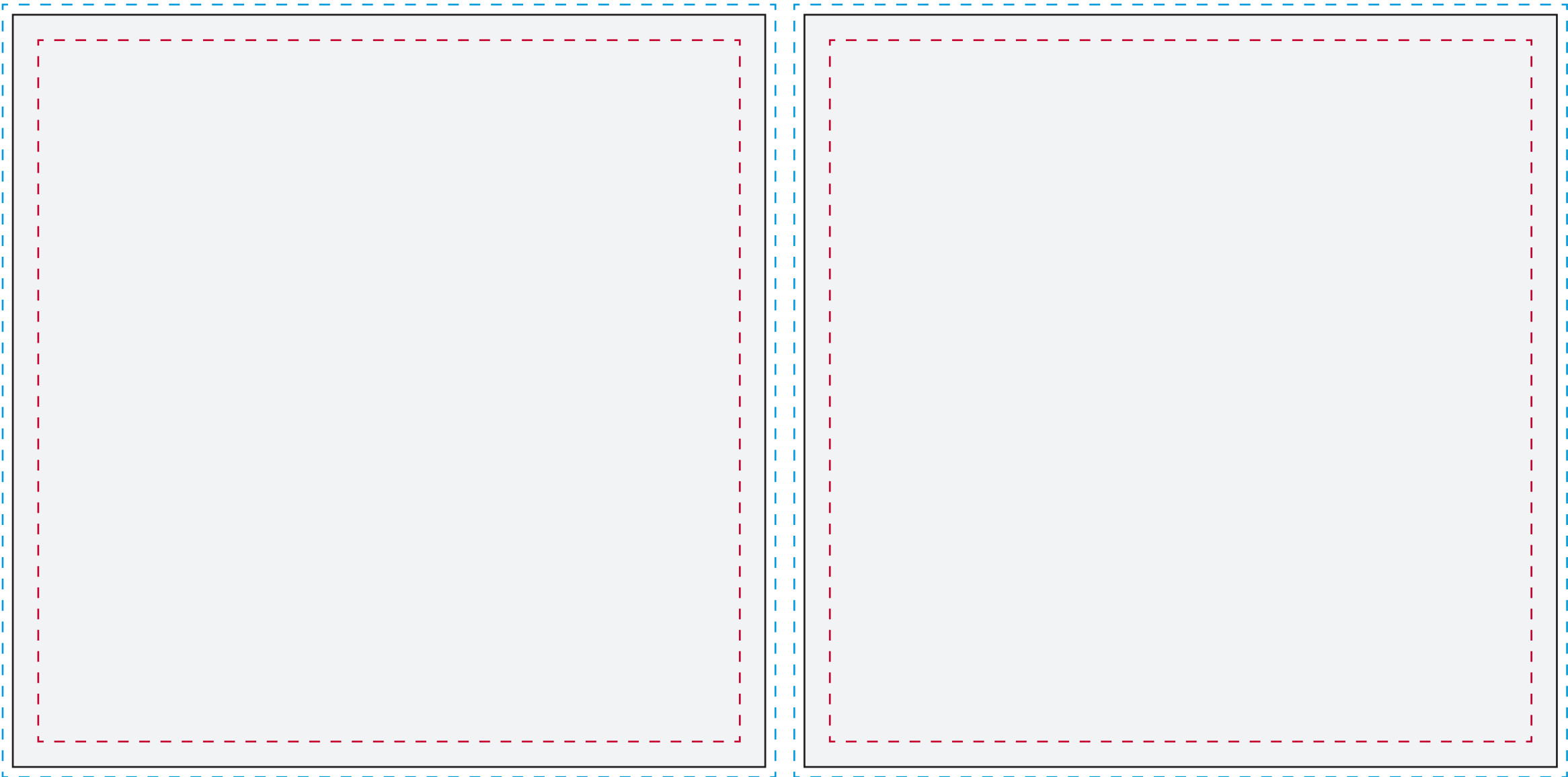


### Artwork Advisories



It is the customer's responsibility to ensure that the proof is correct in all areas. Please be sure to double-check spelling, grammar, layout and design before approving artwork. Due to the variation in monitor colours and adjustments, PDF proofs may not provide an accurate colour representation of the final product & printed work. Once artwork is approved, your order will be processed based on the above unless any amendments are made. All orders are subject to our terms and conditions.

Please email all approvals/amends to your order processor.



Sheet Reverse

Sheet Front

- - - - Safe text area
- — — Print area / cut line
- - - - Bleed

Scale    **100%**    Print area    **148 x 148 mm**    Logo size    **xx x xx mm**