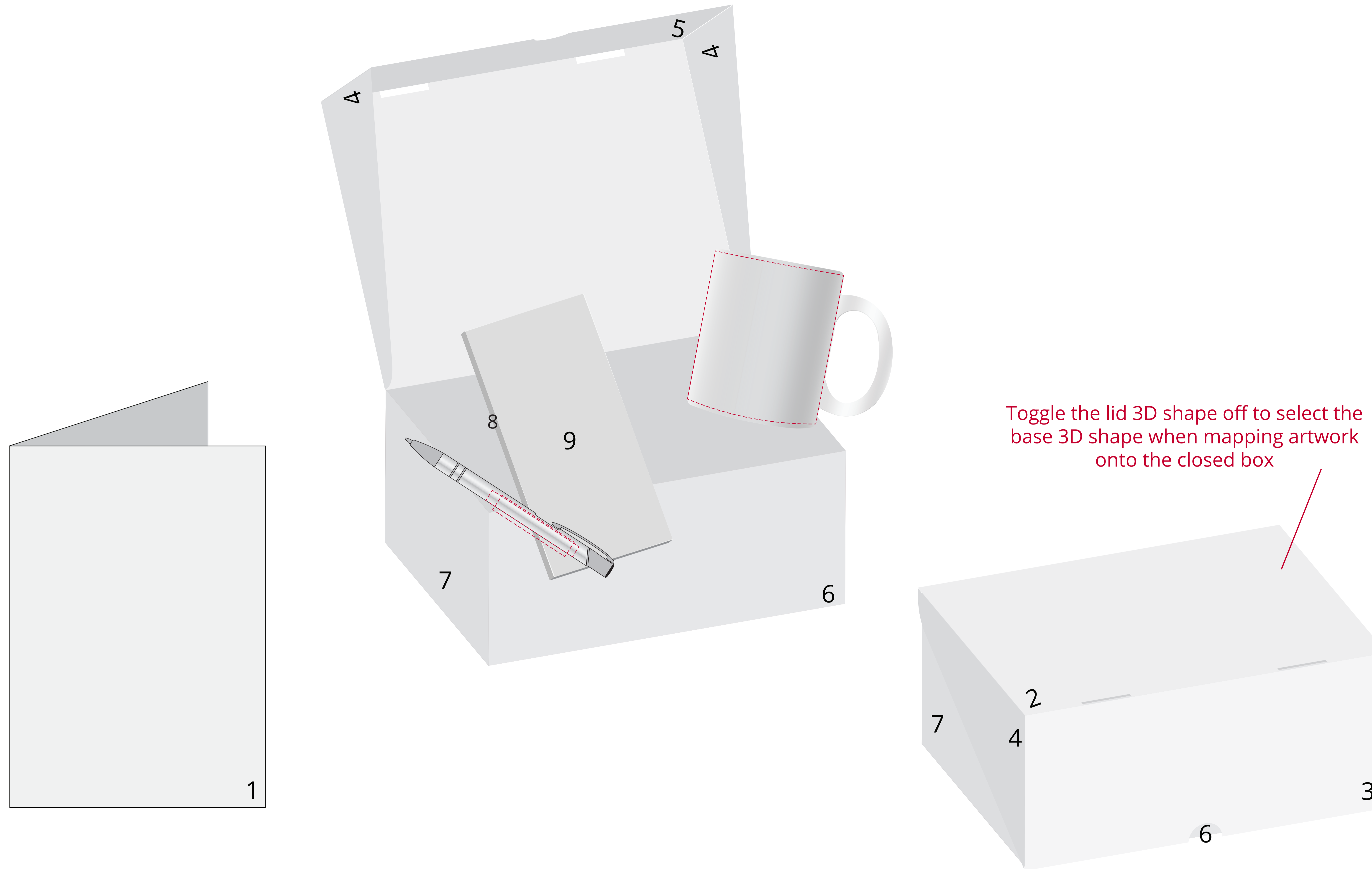


# YOUR VISUAL PROOF (1 of 6)

Order Reference xxxxxx  
 Date created xx/xx/xx  
 Created by xx



Product 234574  
 Box colour White  
 Greeting card col. White  
 Chocolate bar col. White  
 Pen colour White  
 Mug colour White  
 Branding Full Colour & Engraved

### Artwork Advisories

This template is not to scale and is to be used as a guide for print size & positioning only.

It is the customer's responsibility to ensure that the proof is correct in all areas. Please be sure to double-check spelling, grammar, layout and design before approving artwork. Due to the variation in monitor colours and adjustments, PDF proofs may not provide an accurate colour representation **of the final product & printed work.** Once artwork is approved, your order will be processed based on the above unless any amendments are made. All orders are subject to our terms and conditions.

Please email all approvals/amends to your **order processor.**

Visual purposes only. Please see pages 2-6 for actual artwork size.

# YOUR VISUAL PROOF (2 of 6)

## Artwork with NO BACKGROUND

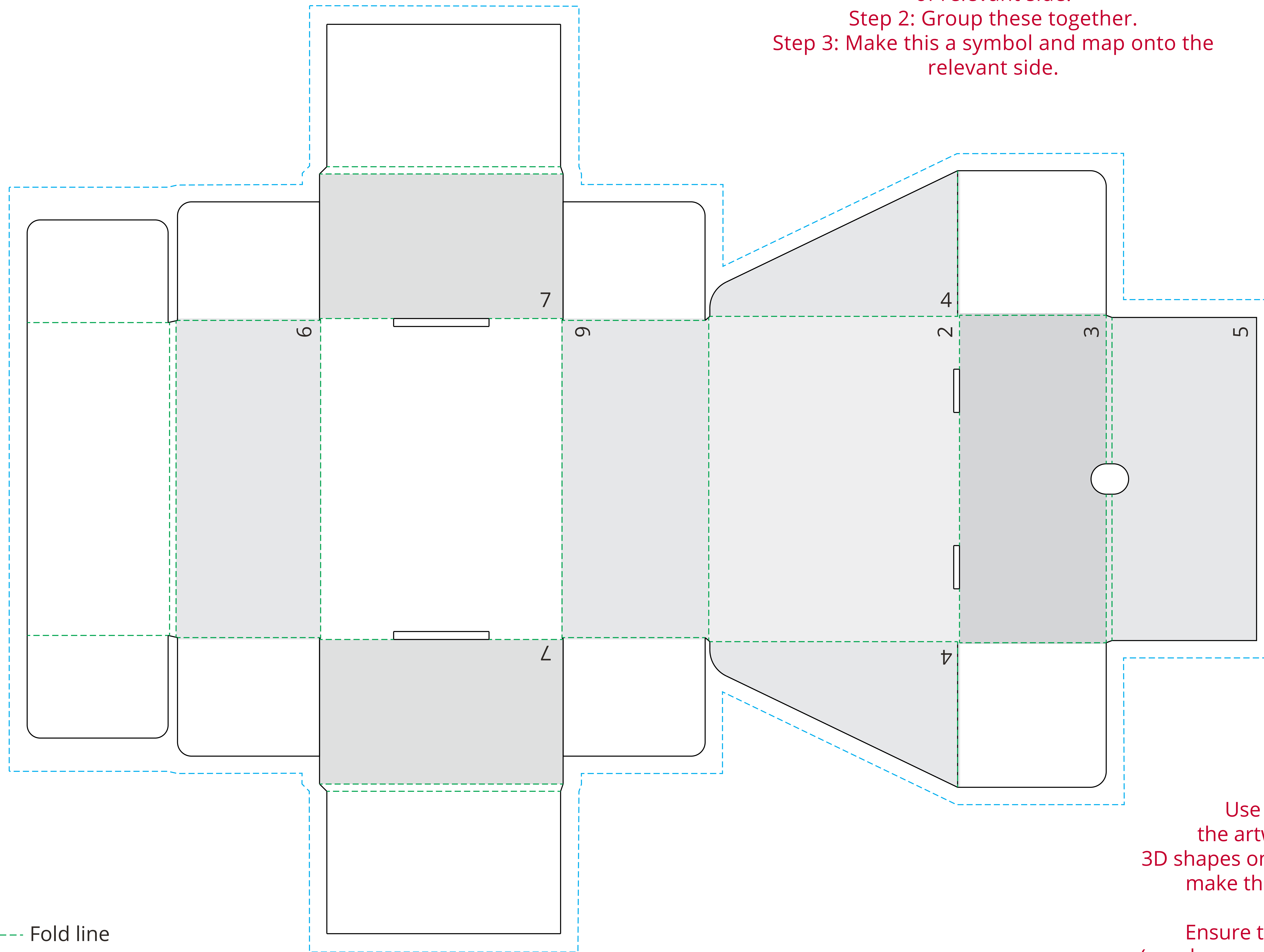
Step 1: Copy clipping shape and artwork of relevant side.

Step 2: Group these together.

Step 3: Make this a symbol and map onto the relevant side.

Order Reference	xxxxxx
Date created	xx/xx/xx
Created by	xx

Print area	All Over Print
Logo size	xx x xxmm
Branding	Full Colour



## Artwork WITH BACKGROUND

Use the numbered shapes below to clip copies of the artwork and match them to the correct sides of the 3D shapes on page 1, rasterize each section (high and transparent) make these into symbols and name them by the number.

Ensure the artwork has been mapped on the correct way. (numbers are on the same corners of each shape on page 1 and 2)

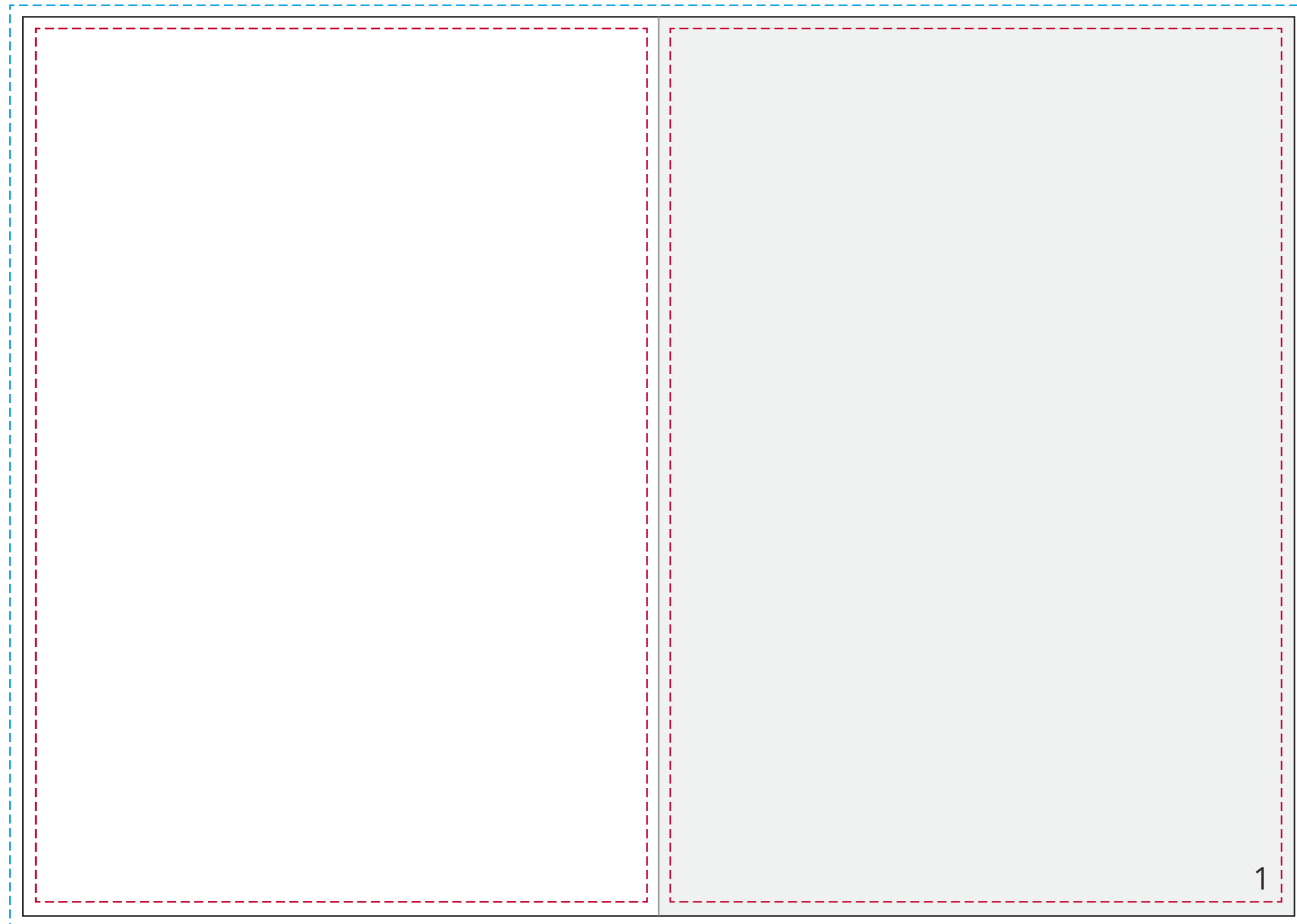
- Fold line
- Print area
- Bleed

Visual scale 100%.

# YOUR VISUAL PROOF (3 of 6)

Order Reference    xxxxxx  
Date created        xx/xx/xx  
Created by            xx

Print area            297 x 210 mm  
Logo size             xx x xx mm  
Branding              Full Colour



Use the numbered shapes below to clip copies of the artwork and match them to the correct sides of the 3D shapes on page 1, rasterize each section (high and transparent) make these into symbols and name them by the number.

Ensure the artwork has been mapped on the correct way. (numbers are on the same corners of each shape on page 1 and 3)

- Safe text area
- Bleed
- Cut line
- Folds

Visual scale 100%.

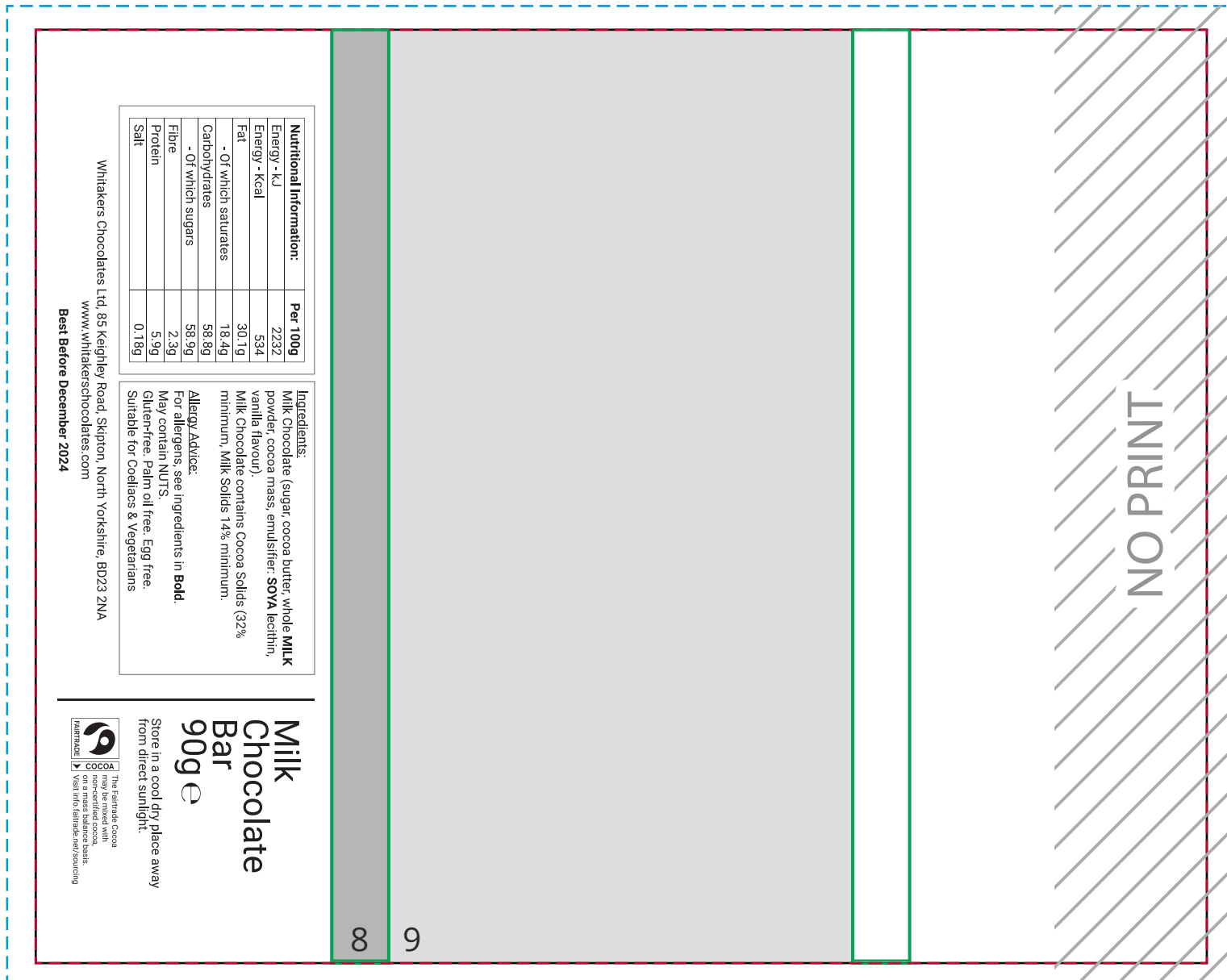
# YOUR VISUAL PROOF (4 of 6)

Order Reference      xxxxxx  
 Date created        xx/xx/xx  
 Created by          xx

Print area            192 x 153 mm  
 Logo size            xx x xx mm  
 Branding            Full Colour

Use the numbered shapes below to clip copies of the artwork and match them to the correct sides of the 3D shapes on page 1, rasterize each section (high and transparent) make these into symbols and name them by the number.

Ensure the artwork has been mapped on the correct way. (numbers are on the same corners of each shape on page 1 and 4)



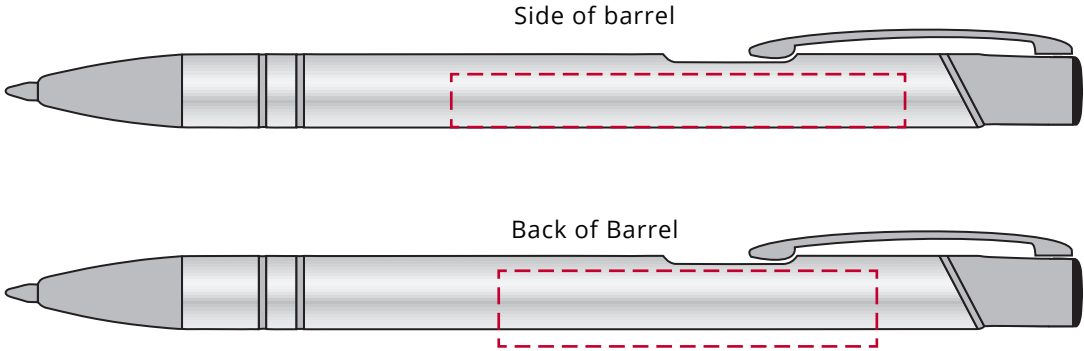
- Fold lines
- - - Bleed
- - - Cut line/print area

Visual scale 100%.

# YOUR VISUAL PROOF (5 of 6)

Order Reference xxxxxx  
Date created xx/xx/xx  
Created by xx

Print area 60 x 7 mm (side of barrel)  
50 x 10 mm (back of barrel)  
Logo Size xx x xx mm  
Branding Engraved



If the artwork falls over the edge of the pen,  
**DO NOT** create a warped version on this page.  
Only create warped artwork on page 1.

# YOUR VISUAL PROOF (6 of 6)

Order Reference xxxxxx  
Date created xx/xx/xx  
Created by xx

Print area 220 x 95 mm  
Logo size xx x xx mm  
Branding Full Colour



- Print area
- Safe text area

Visual scale 100%.