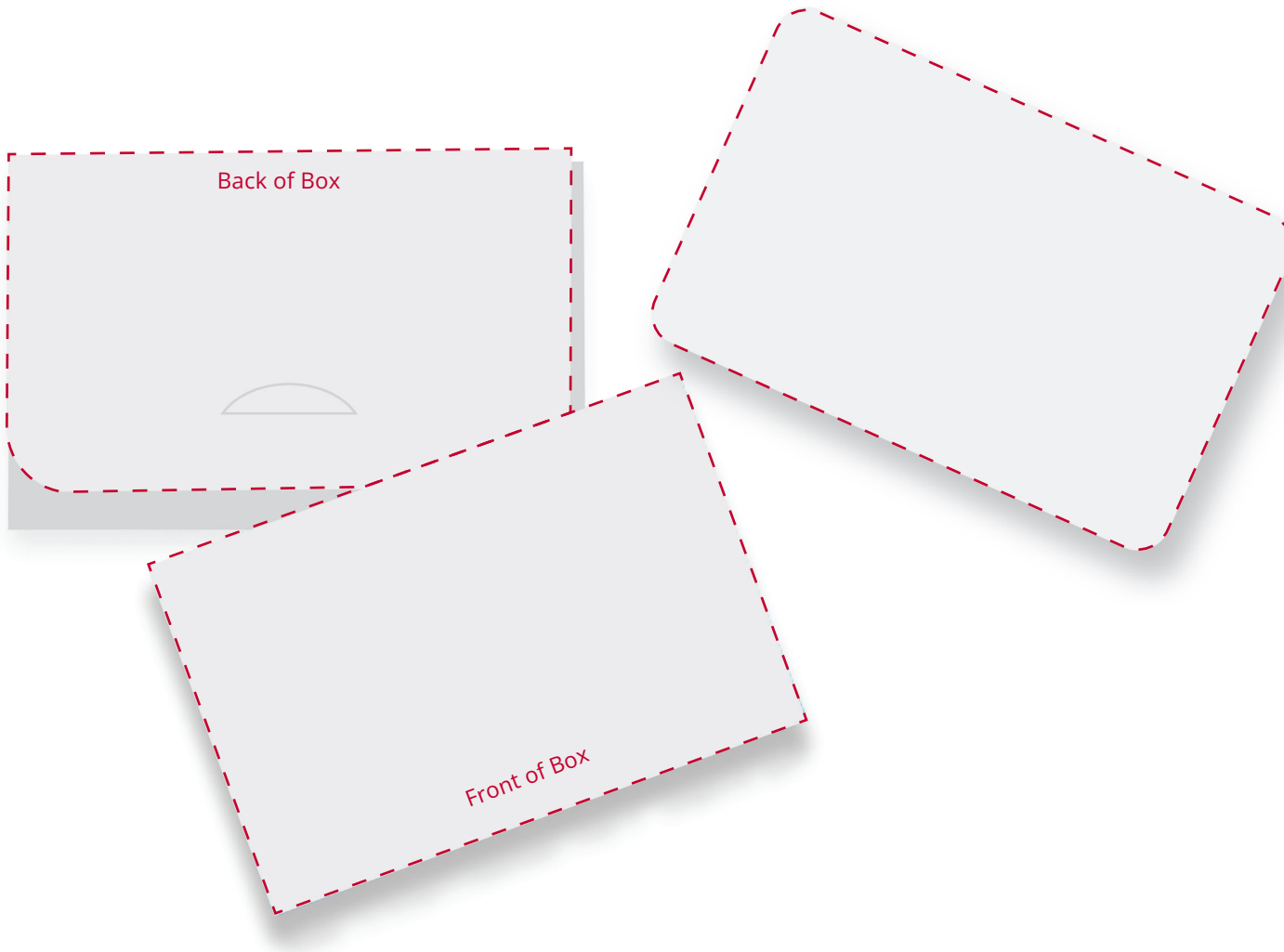


# YOUR VISUAL PROOF (1 of 3)

Order Reference	xxxxxx
Date created	xx/xx/xx
Created by	xx

Box

Card (Back)



Product	216333
Colour	White
Branding	Full Colour

## Artwork Advisories

Full colour printed colours may differ when printed to the final product.

It is the customer's responsibility to ensure that the proof is correct in all areas. Please be sure to double-check spelling, grammar, layout and design before approving artwork. Due to the variation in monitor colours and adjustments, PDF proofs may not provide an accurate colour representation **of the final product & printed work**. Once artwork is approved, your order will be processed based on the above unless any amendments are made. All orders are subject to our terms and conditions.

Please email all approvals/amends to your **order processor**.

For Visual Purposes Only. Please see pages 2-3 for actual artwork size.

# YOUR VISUAL PROOF (2 of 3)

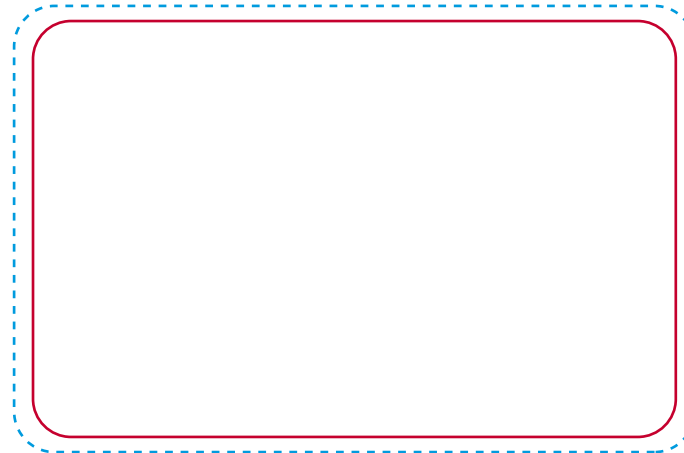
Order Reference	xxxxxx
Date created	xx/xx/xx
Created by	xx

Position	Cards
Print area	85 x 55 mm
Logo size	xx x xxmm
Branding	Full Colour

Design on the front is for visual purposes only.



Front



Back

--- Bleed  
— Print Area

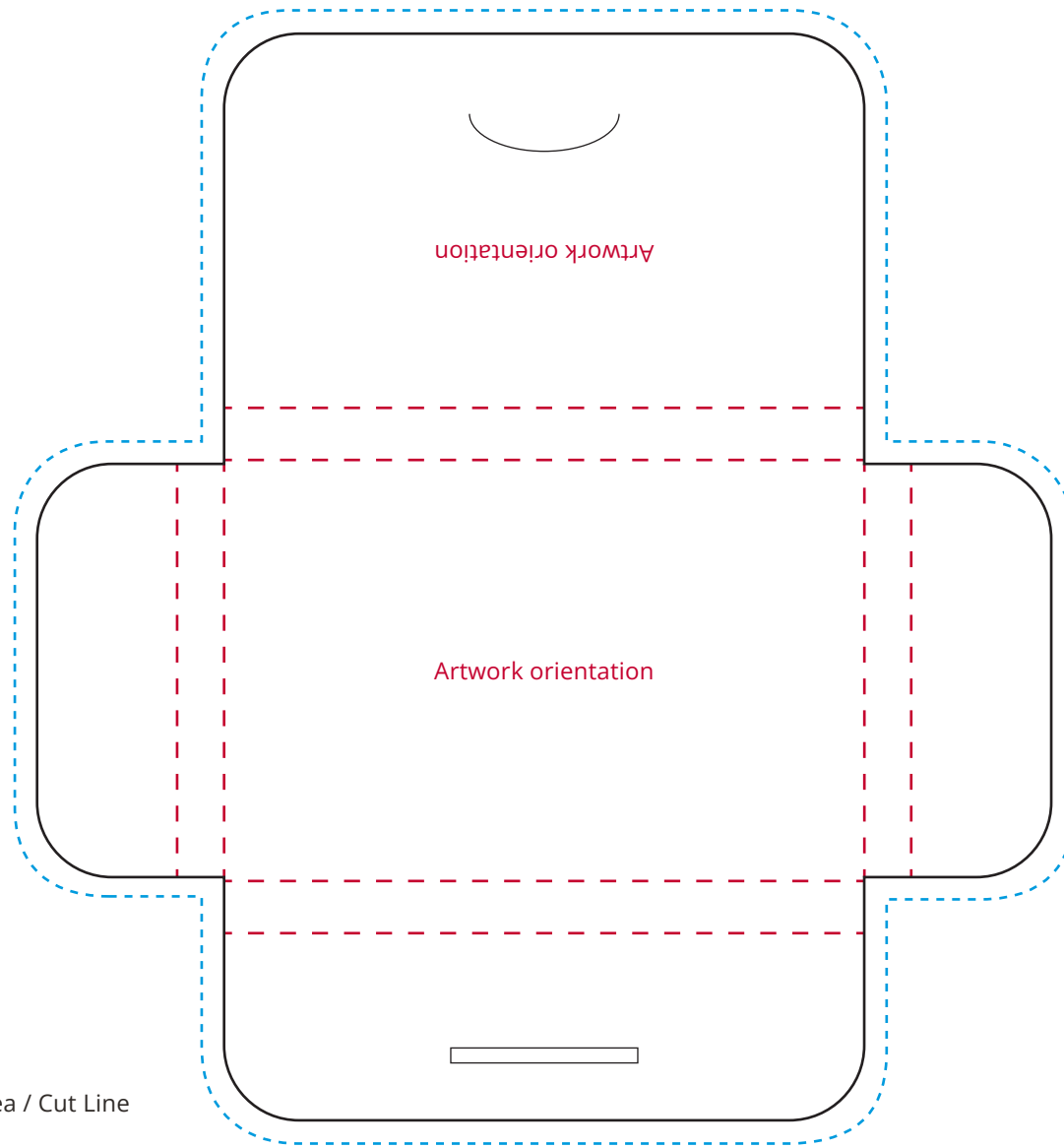
Visual scale 100%.

## Artwork Advisories

Branding is for the back of the product only. Designs for the front of the card will be picked at random from 21 stock designs unless otherwise requested.

# YOUR VISUAL PROOF (3 of 3)

Order Reference	xxxxxx
Date created	xx/xx/xx
Created by	xx



Position	Box
Print area	All Over Print
Logo size	xx x xxmm
Branding	Full Colour

Visual scale 100%.