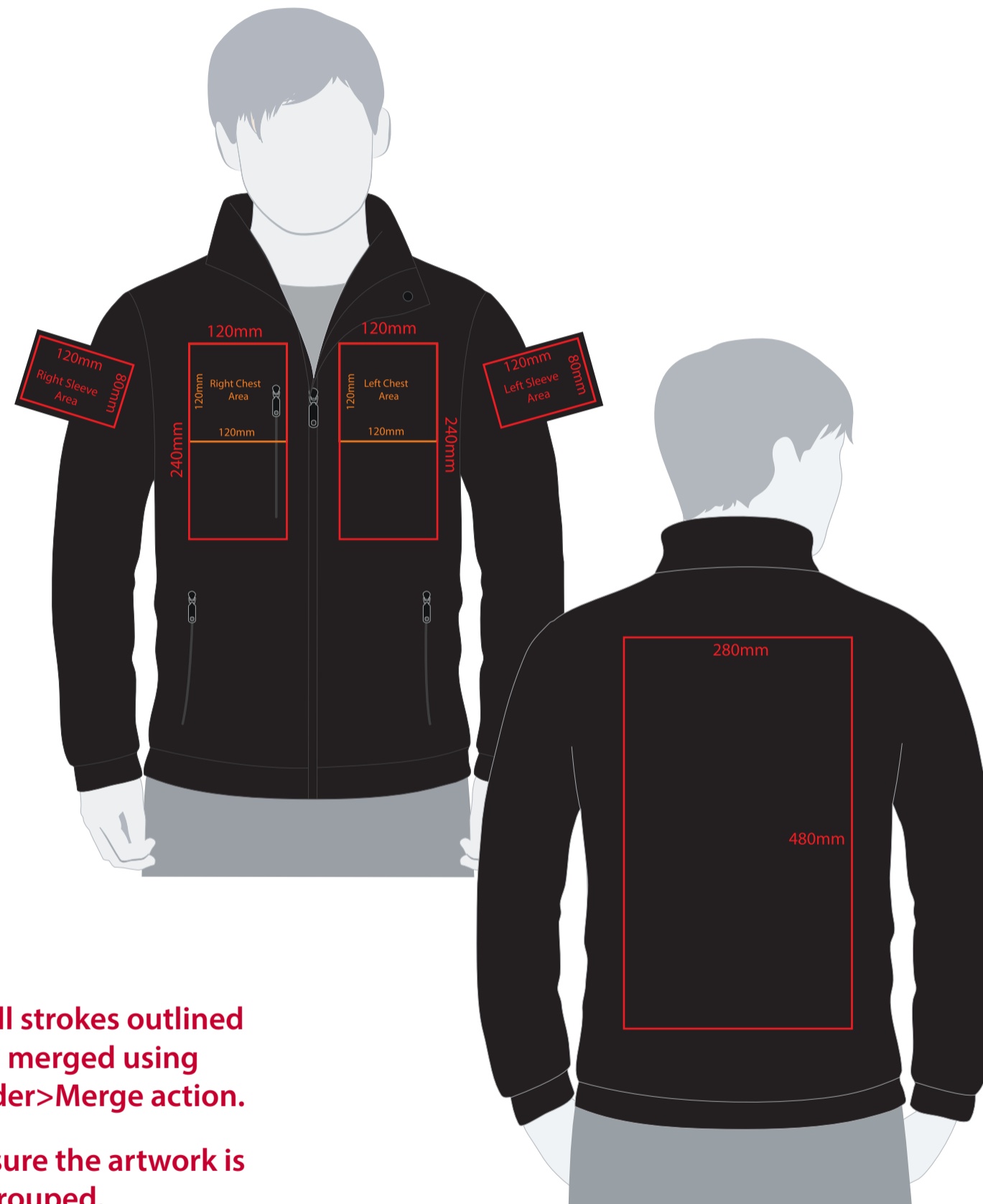


YOUR VISUAL PROOF (1 of 2)

Order Reference xxxxxx
Date created xx/xx/xx
Created by xx



Must have all strokes outlined and then merged using the Pathfinder>Merge action.

Then make sure the artwork is grouped.

Product 199071
Colour xxxxxx
Branding Embroidered

Artwork Advisories

This template is not to scale and is to be used as a guide for print size & positioning only.

Please note the actual embroidery may differ slightly once digitised.

Pantone/thread colours are matched from universal swatch books. However, production processes may at times have a slight effect on how colours appear on garments.

It is the customer's responsibility to ensure that the proof is correct in all areas. Please be sure to double-check spelling, grammar, layout and design before approving artwork. **Due to the variation in monitor colours and adjustments, PDF proofs may not provide an accurate colour representation of the final product & printed work.** Once artwork is approved, your order will be processed based on the above unless any amendments are made. All orders are subject to our terms and conditions.

Please email all approvals/amends to your order processor.

Artwork not to scale (to be used as a guide only) Please see page 2 for actual artwork size.

YOUR VISUAL PROOF (2 of 2)



Order Reference	xxxxxx
Date created	xx/xx/xx
Created by	xx

Print position	xxx
Print area	90 x 50 mm
Logo size	xx x xxmm
Branding	Embroidered

Embroidery (Madeira Thread) Colours

