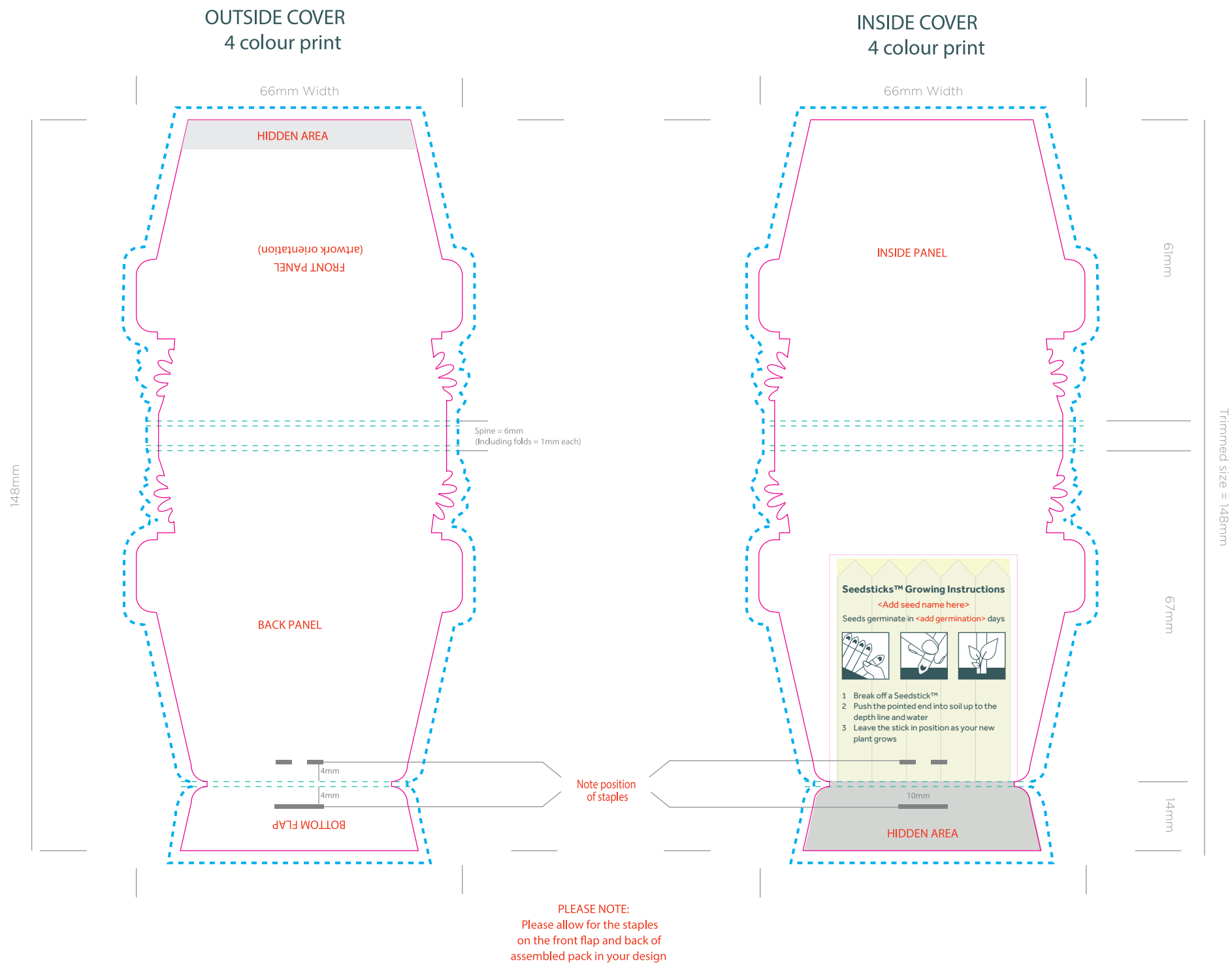


# 5 SEEDSTICK PLANT POT DESIGN

## ARTWORK SPECIFICATIONS



### ARTWORK SPECIFICATIONS / REQUIREMENTS

Art must be supplied in CMYK format or PMS colours specified, RGB is not acceptable

All fonts must be converted to outlines

Working file must be compatible with CS5 - Illustrator

3mm bleed is required beyond the trim lines

Files to be supplied in PDF, EPS or AI format only





A PDF proof will be emailed for confirmation of design for you to sign off prior to print production

No responsibility will be accepted for errors or changes once the artwork has been signed off

If you require a chemical proof (CTP) additional £60.00

Artwork setups will be incurred after the first art proof has been amended

### KEY

-  Staples
-  Fold Lines
-  Cut Line
-  Bleed Line

### PROJECT DETAILS

Client  Job Ref

Job No  Quantity  Date

### PROJECT APPROVAL

Approved Yes  No  Version  Name

Signed  Date