

Pen & Business Card Set

Print Areas: Backing Card - 114 x 169mm each side, Pen Pouch - 42.5 x 144mm each side
Business Card - 85 x 55mm

Line Drawing Scale for Backing Card : 50%

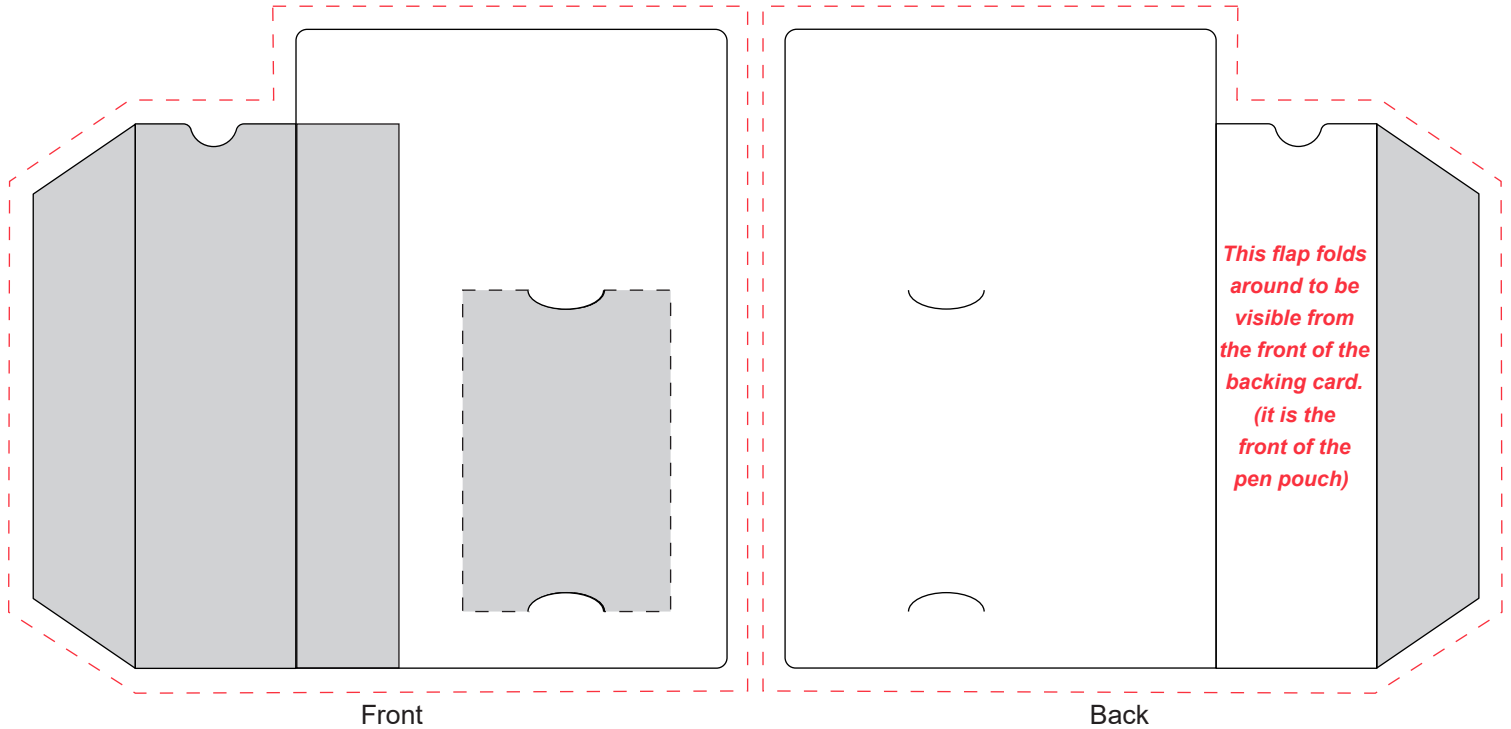
Line Drawing Scale for Business Card: 100%

Please Note: The grey areas on product template indicate the areas that are NOT VISIBLE once fully assembled

Please Note: The RED dotted line indicates the BLEED AREA for the product - Artwork in this area will not be printed

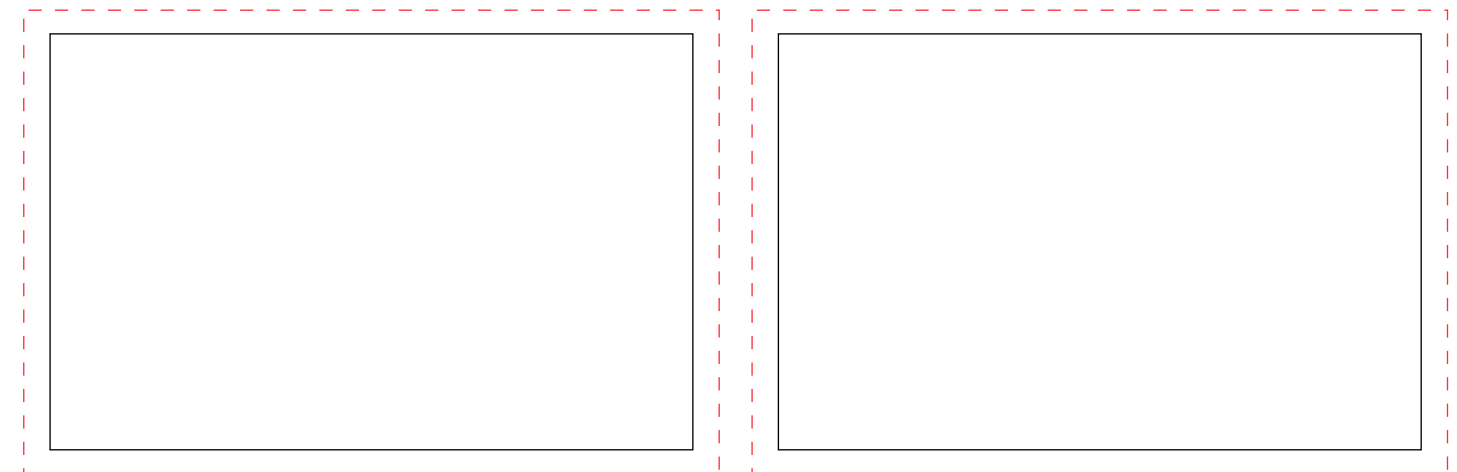
Please Note: The pen / pencil artwork will be sent through in a separate document

WE STRONGLY ADVISE THAT YOU ORDER A PRODUCT SAMPLE BEFORE PROCEEDING



Front

Back



Your order will be processed, based on the above, unless you have made amendments. All orders are subject to our full terms & conditions. However, we would like to draw your attention to the following terms in particular.

1. Claims for faulty goods will be honoured, only if the goods are returned to us. We will not issue credit notes or refunds for goods that have been distributed. Please ensure that goods are satisfactory before distribution.
2. Metallic printing inks (gold, silver, etc.) have a very limited life due to their formulation. You are advised to request an over varnish, in writing, for this type of printing. This service is at additional cost and not inclusive of any prices listed or quoted.
3. We are not responsible for delays during transit. We dispatch goods on your behalf and the goods become your property the moment they leave our premises.

I confirm that I have thoroughly checked all information on this document, including layout, fonts, spelling, print colours, separations, print size and position, etc.

Please proceed without amendment(s) ☐

Please amend as above & reproof ☐

By signing below I accept responsibility for errors not corrected and understand that once the goods are printed, the printed image can not be cleaned off or the goods reclaimed.

Signed.....

Print Name.....

Date.....